

Chartbook Review

(charts as of 05/18/2022)

The FRED Report

4514 Chamblee-Dunwoody
Dunwoody, GA 30338

Web:

www.theFREDreport.com

Phone: 404-875-FRED

fred@thefredreport.com

By Fred Meissner, CMT

www.theFREDreport.com

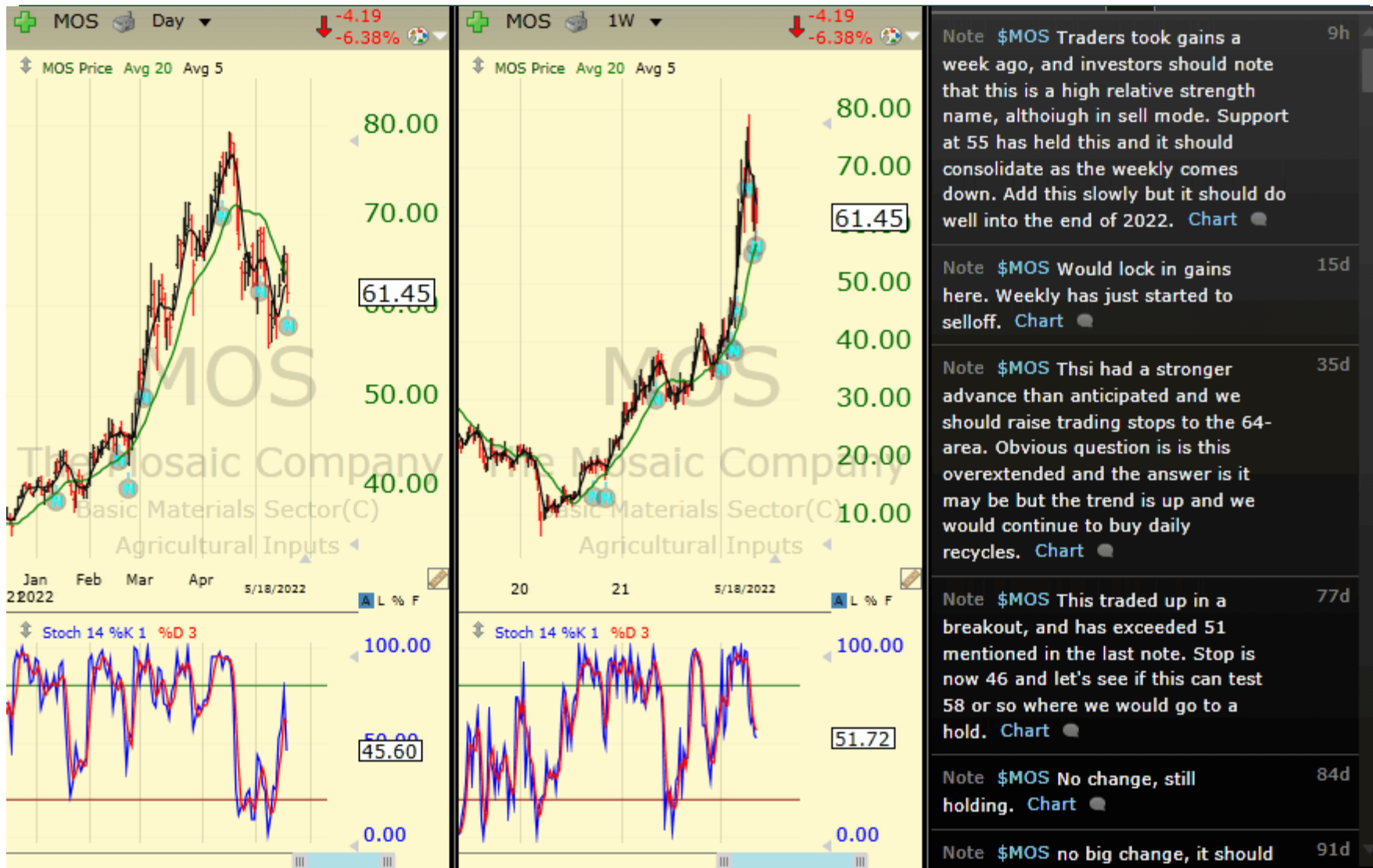
Chartbook: Stocks of Interest

Sym	Company	trkPrice	Sector ▲	Industry
MOS	The Mosaic Company	61.44	Basic Materials Sector	Agricultural Inputs
CENX	Century Aluminum Company	11.54	Basic Materials Sector	Aluminum
VMC	Vulcan Materials Co	160.53	Basic Materials Sector	Building Materials
DOW	Dow Inc	68.91	Basic Materials Sector	Chemicals
FCX	Freeport-McMoran Inc	35.34	Basic Materials Sector	Copper
BHP	BHP Billiton Limited ADS	63.83	Basic Materials Sector	Industrial Metals & Minerals
HYMC	Hycroft Mining Holding Corporatio	1.26	Basic Materials Sector	Industrial Metals & Minerals
LYB	Lyondellbasell Industries Nv O	110.24	Basic Materials Sector	Specialty Chemicals
GPI	Group 1 Automotive Inc	174.23	Consumer Cyclical Sector	Auto & Truck Dealerships
TSLA	Tesla Inc	709.75	Consumer Cyclical Sector	Auto Manufacturers
DKNG	DraftKings Inc	13.86	Consumer Cyclical Sector	Gambling
DS	Drive Shack Inc	1.54	Consumer Cyclical Sector	Leisure
PARA	Paramount Global	31.55	Consumer Cyclical Sector	Media - Diversified
AMZN	Amazon.Com Inc	2143.19	Consumer Cyclical Sector	Specialty Retail
KO	Coca-Cola Co	61.20	Consumer Defensive Sector	Beverages - Soft Drinks
COST	Costco Wholesale Corp	429.47	Consumer Defensive Sector	Discount Stores
DLTR	Dollar Tree Inc	133.79	Consumer Defensive Sector	Discount Stores
WMT	Walmart Inc	122.42	Consumer Defensive Sector	Discount Stores
TAL	TAL Education Group	3.90	Consumer Defensive Sector	Education & Training Services
OXY	Occidental Petro Cp	64.31	Energy Sector	Oil & Gas E&P
EPD	Enterprise Products Part	26.60	Energy Sector	Oil & Gas Midstream
LNG	Cheniere Energy Inc	132.82	Energy Sector	Oil & Gas Midstream
BLK	Blackrock Incorporated	592.17	Financial Services Sector	Asset Management
BX	Blackstone Inc	103.59	Financial Services Sector	Asset Management
BAC	Bank Of America Corp	34.88	Financial Services Sector	Banks - Global
NYCB	New York Community Bancorp	9.59	Financial Services Sector	Banks - Regional
SNV	Synovus Financial Corp	40.22	Financial Services Sector	Banks - Regional
FOCS	Focus Financial Partners Inc	35.49	Financial Services Sector	Capital Markets
DFS	Discover Financial Services	105.15	Financial Services Sector	Credit Services
MA	Mastercard Incorporated	336.06	Financial Services Sector	Credit Services
UPST	Upstart Holdings Inc	48.34	Financial Services Sector	Credit Services
AFL	Aflac Inc	56.34	Financial Services Sector	Insurance - Life

Chartbook: Stocks of Interest

Sym	Company	trkPrice	Sector	Industry
CB	Chubb Corp	207.44	Financial Services Sector	Insurance - Property & Casualty
KNSL	Kinsale Capital Group Inc	208.24	Financial Services Sector	Insurance - Property & Casualty
MKL	Markel Corp	1348.95	Financial Services Sector	Insurance - Property & Casualty
REGN	Regeneron Pharm Inc	659.33	Healthcare Sector	Biotechnology
ILMN	Illumina Inc	239.81	Healthcare Sector	Diagnostics & Research
HCSG	Healthcare Services Group Inc	17.05	Healthcare Sector	Medical Care
UTMD	Utah Medical Products Inc	83.74	Healthcare Sector	Medical Instruments & Supplies
SAVE	Spirit Airlines, Inc	19.40	Industrials Sector	Airlines
GPN	Global Pmts Inc	119.80	Industrials Sector	Business Services
GXO	GXO Logistics Inc	53.40	Industrials Sector	Business Services
GNRC	Generac Holdings Inc	209.91	Industrials Sector	Diversified Industrials
WCC	WESCO International Inc	121.12	Industrials Sector	Industrial Distribution
UNP	Union Pacific Corp	225.16	Industrials Sector	Railroads
HRI	Herc Holdings Inc	105.42	Industrials Sector	Rental & Leasing Services
GOGL	Golden Ocean Group Limited	14.72	Industrials Sector	Shipping & Ports
WPC	Wp Carey & Co Llc	81.64	Real Estate Sector	REIT - Diversified
PLD	ProLogis Inc	119.66	Real Estate Sector	REIT - Industrial
AMD	Advanced Micro Devices	96.32	Technology Sector	Semiconductors
INTC	Intel Corp	42.37	Technology Sector	Semiconductors
NVDA	NVIDIA Corporation	169.40	Technology Sector	Semiconductors
WOLF	Wolfspeed Inc	71.89	Technology Sector	Semiconductors
LAZR	Luminar Technologies Inc	9.90	Technology Sector	Software - Application
CRWD	CrowdStrike Holdings Inc	138.50	Technology Sector	Software - Infrastructure
NET	Cloudflare Inc	53.36	Technology Sector	Software - Infrastructure
SQ	Block Inc	82.06	Technology Sector	Software - Infrastructure
COPX	Global X Copper Miners Etf	36.66		
FMF	First Trust Morningstar Mgd Futs E	51.89		
FTXG	First Trust Nasdaq Food & Beverag	26.04		
IBB	iShares Nasdaq Biotechnology Ind	113.45		
IDX	VanEck Vectors Indonesia Index	20.09		
SMH	VanEck Vectors Semiconductor ET	227.87		
VBR	Vanguard Small Cap Value ETF	159.99		

Chartbook: Stocks of Interest



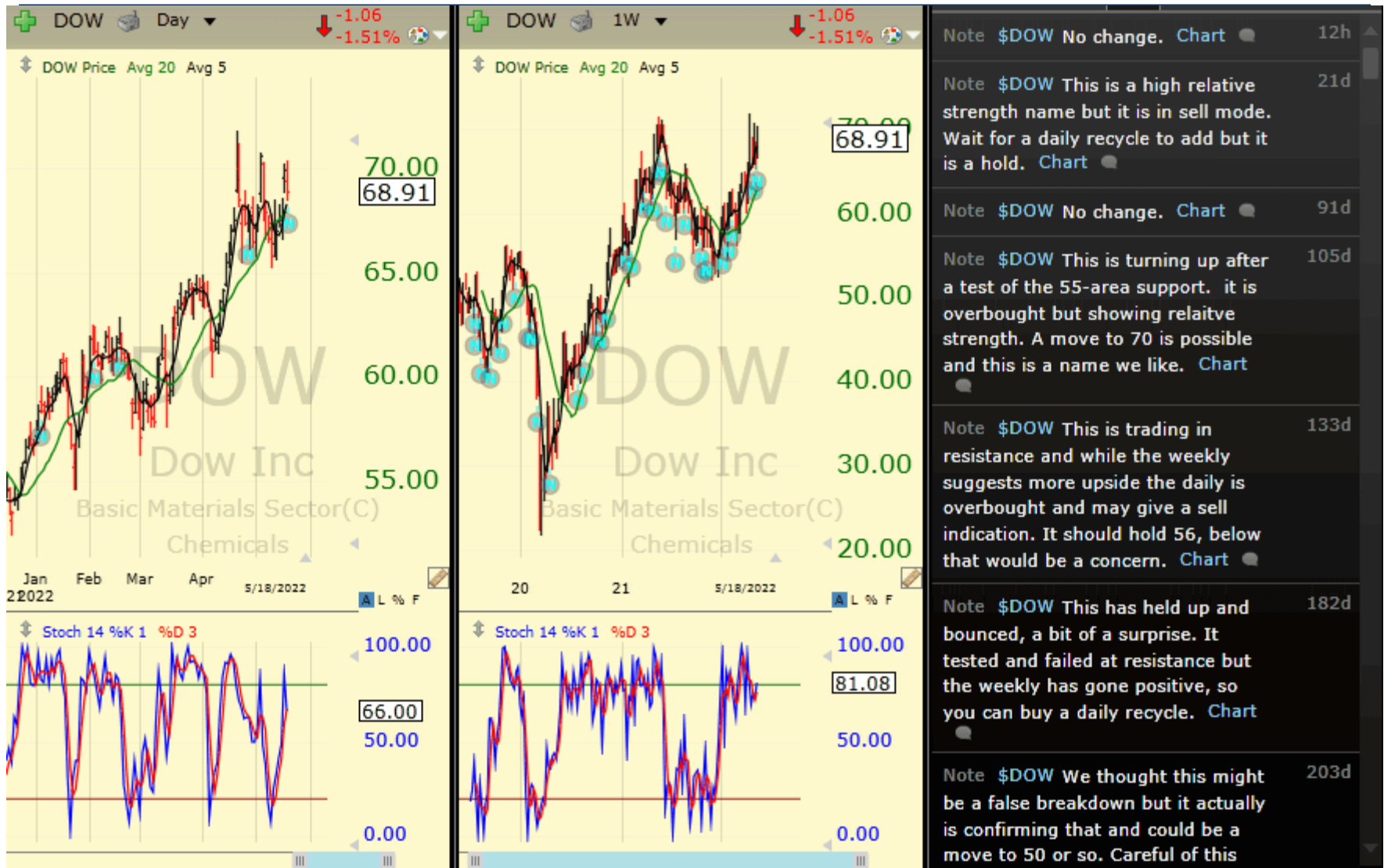
Chartbook: Stocks of Interest



Chartbook: Stocks of Interest



Chartbook: Stocks of Interest



Chartbook: Stocks of Interest



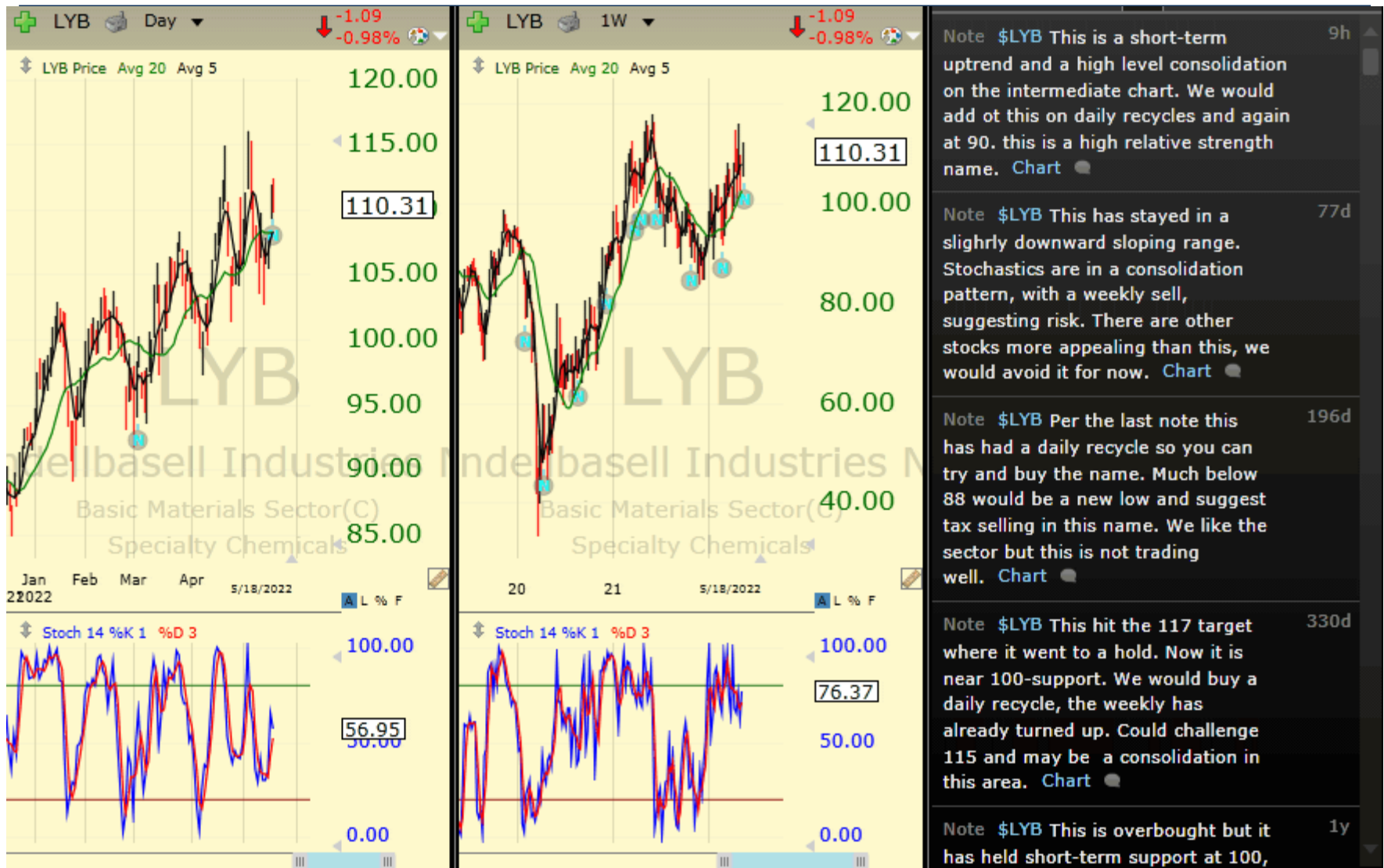
Chartbook: Stocks of Interest



Chartbook: Stocks of Interest



Chartbook: Stocks of Interest



Chartbook: Stocks of Interest



Chartbook: Stocks of Interest



Chartbook: Stocks of Interest



Chartbook: Stocks of Interest



Chartbook: Stocks of Interest



Chartbook: Stocks of Interest



Chartbook: Stocks of Interest



Chartbook: Stocks of Interest



Chartbook: Stocks of Interest



Chartbook: Stocks of Interest



Chartbook: Stocks of Interest



Chartbook: Stocks of Interest



Chartbook: Stocks of Interest



Chartbook: Stocks of Interest



Chartbook: Stocks of Interest



Chartbook: Stocks of Interest



Chartbook: Stocks of Interest



Chartbook: Stocks of Interest



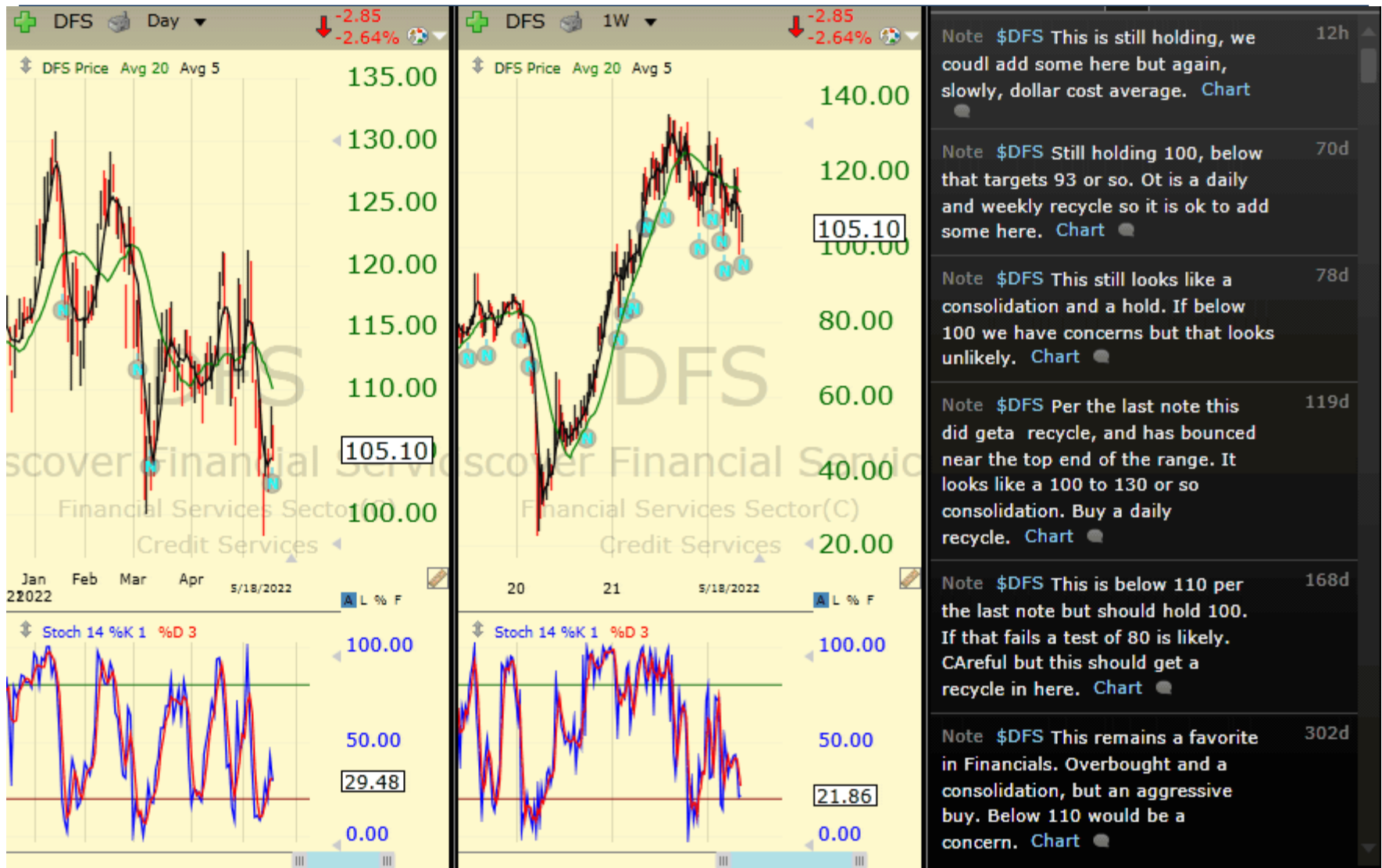
Chartbook: Stocks of Interest



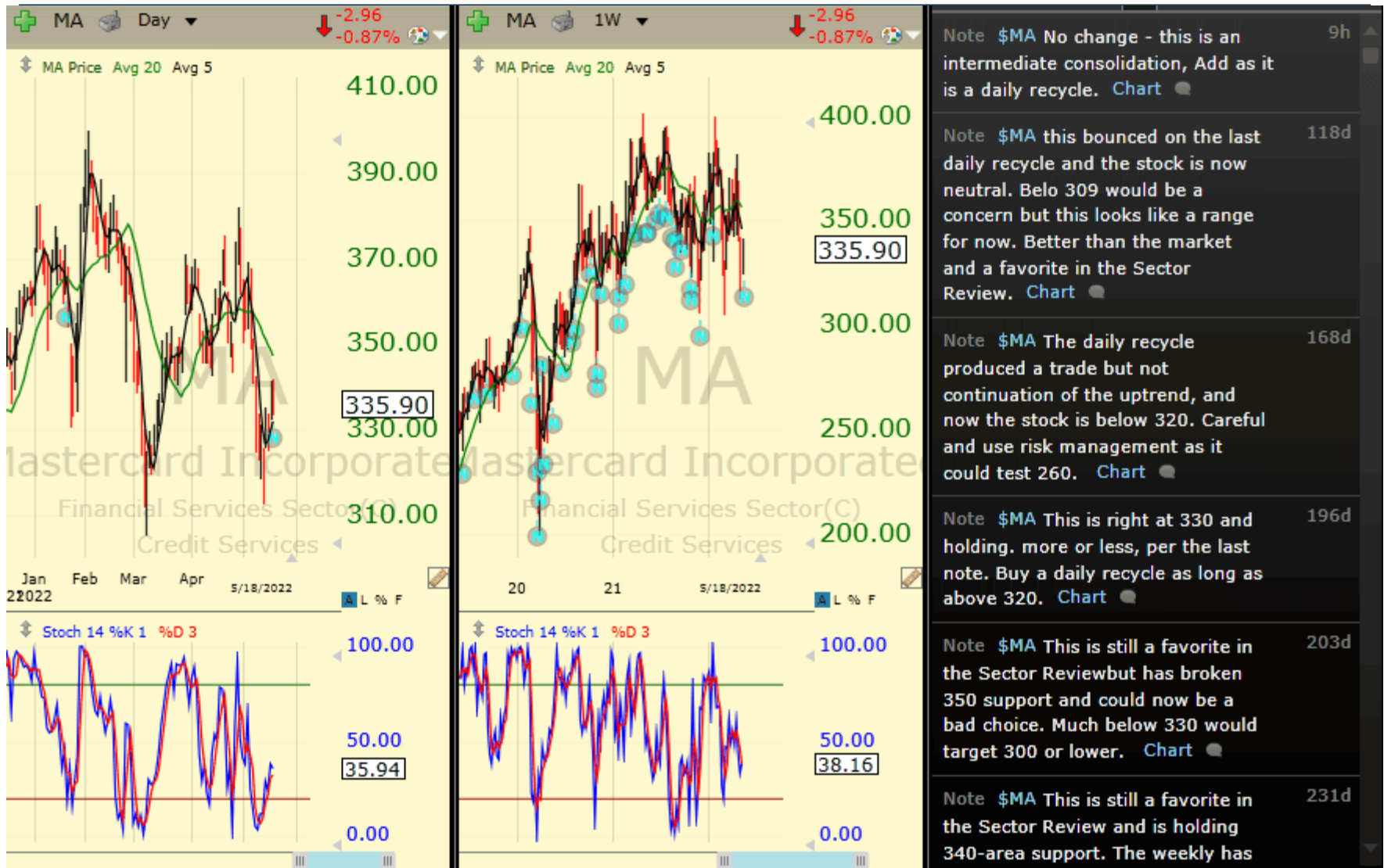
Chartbook: Stocks of Interest



Chartbook: Stocks of Interest



Chartbook: Stocks of Interest



Chartbook: Stocks of Interest



Chartbook: Stocks of Interest



Chartbook: Stocks of Interest



Chartbook: Stocks of Interest



Chartbook: Stocks of Interest



Chartbook: Stocks of Interest



Chartbook: Stocks of Interest



Chartbook: Stocks of Interest



Chartbook: Stocks of Interest



Chartbook: Stocks of Interest



Chartbook: Stocks of Interest



Chartbook: Stocks of Interest



Note \$GXO This is a typical new issue chart, we would avoid it. If you must, use a stop at 49. It could plummet. Chart 11h

Note \$GXO To new to analyze, but below 75 targets 70 or lower. Chart 224d

Chartbook: Stocks of Interest



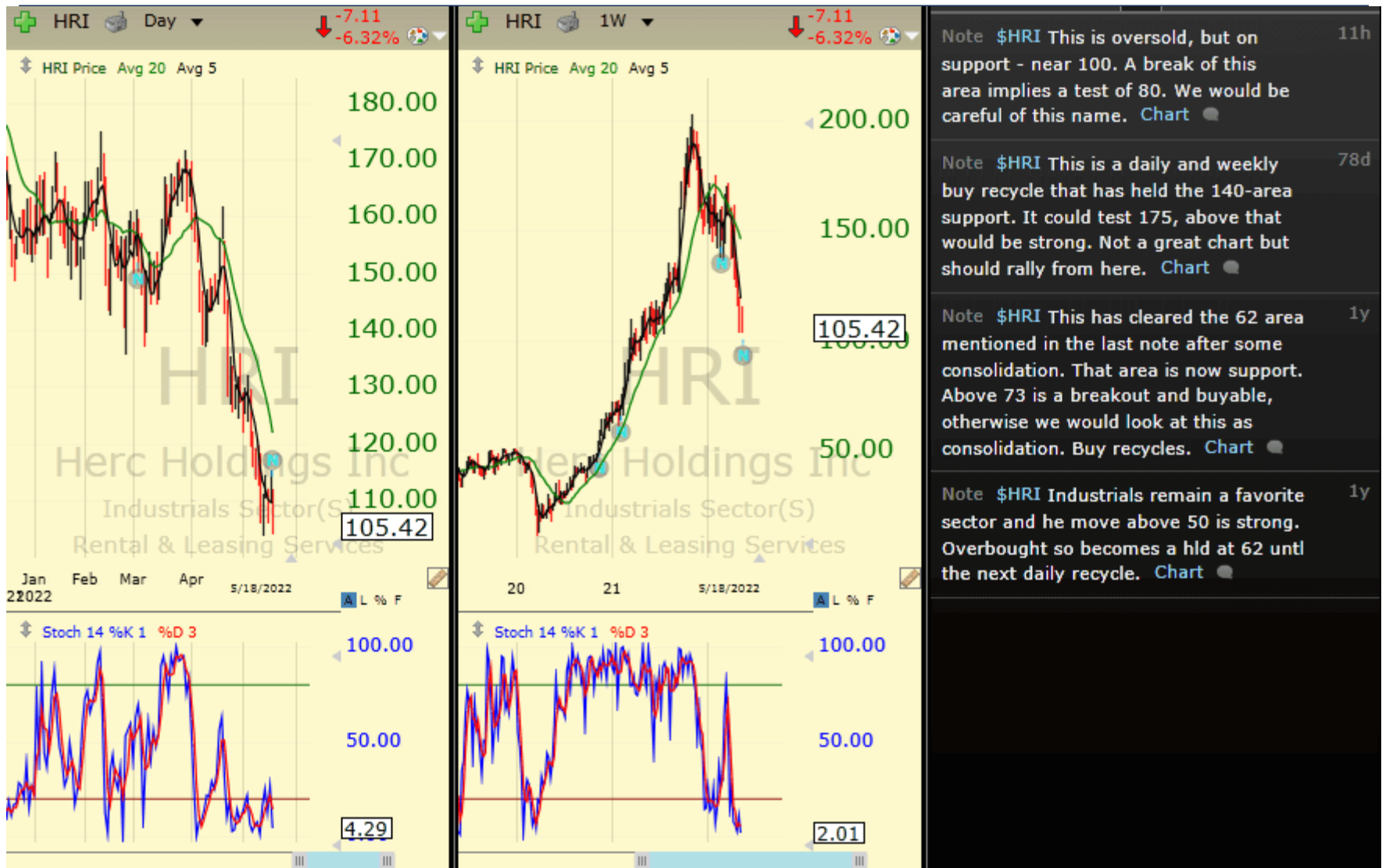
Chartbook: Stocks of Interest



Chartbook: Stocks of Interest



Chartbook: Stocks of Interest



Chartbook: Stocks of Interest



Chartbook: Stocks of Interest



Chartbook: Stocks of Interest



Chartbook: Stocks of Interest



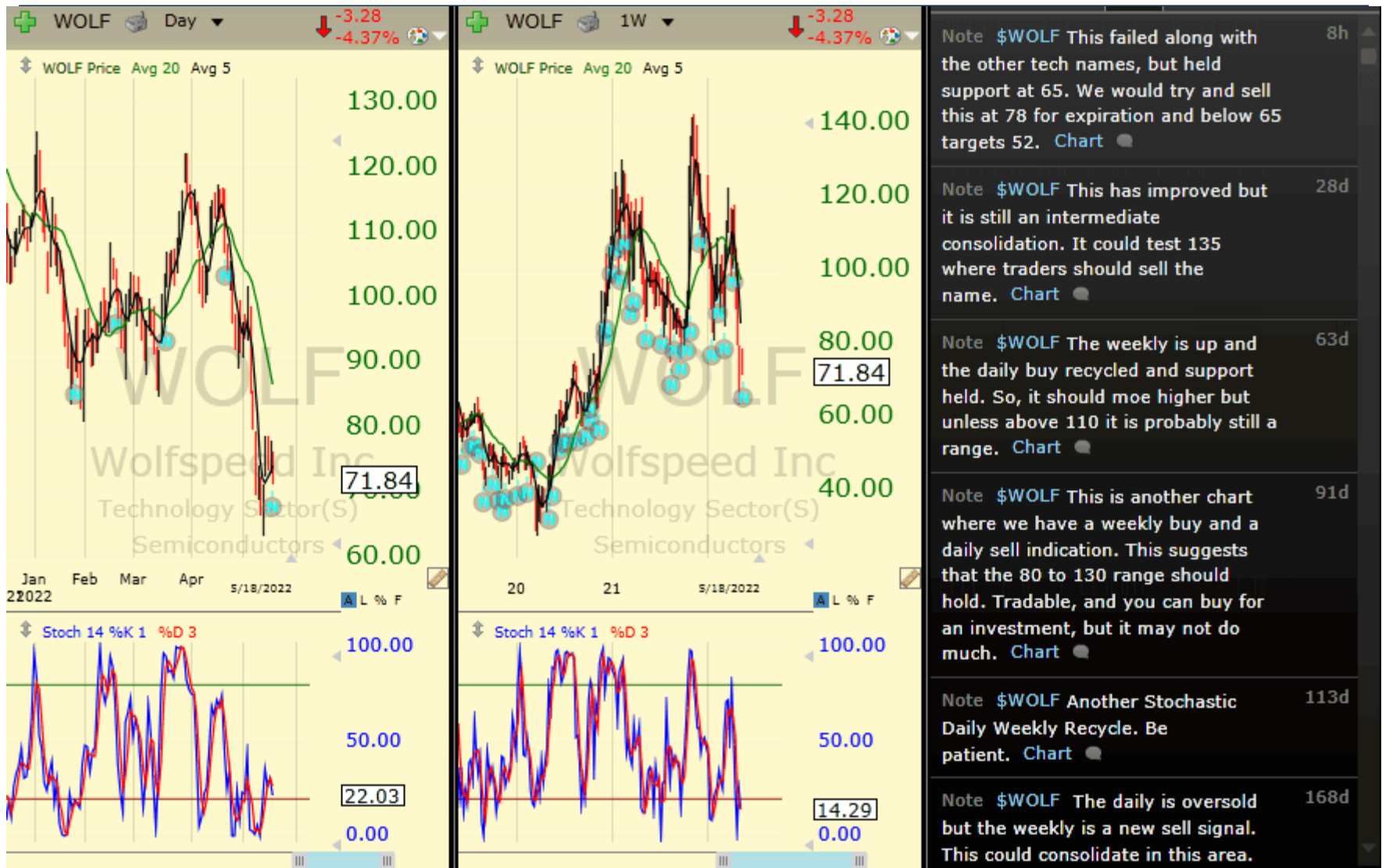
Chartbook: Stocks of Interest



Chartbook: Stocks of Interest



Chartbook: Stocks of Interest



Chartbook: Stocks of Interest



Chartbook: Stocks of Interest



Chartbook: Stocks of Interest



Chartbook: Stocks of Interest



Chartbook: Stocks of Interest



Chartbook: Stocks of Interest



Chartbook: Stocks of Interest



Chartbook: Stocks of Interest



Chartbook: Stocks of Interest



Chartbook: Stocks of Interest



Chartbook: Stocks of Interest



Technical Indicators

Readers will note that we use the same indicators on all of the charts in this presentation. We append definitions of these indicators and are available via the website: [Education and Training Center](#).

Technicals Defined

Moving Averages:

Moving averages are one of the building blocks of Technical Analysis, and there are almost as many ways to use this indicator as there are technicians.

At the FRED report we teach and use a dual moving average crossover system to determine trend. Our favorites are the 5 period and 20 period moving averages. We consider the trend to be up if the 5 is above the 20, and down if below it.

Stochastics:

The Stochastic Oscillator is one of the commonly used momentum oscillators and is standard on charting programs. There are two lines on the chart below, %K and %D.

%K is the faster of the two lines, and represents a mathematical formula that *measures where the current close is in relation to the trading range of the last "X" periods of time*. We use a 14 period look-back, so in plain English %K says where the current close is in the trading range of the last 14 days, expressed as a %.

At the FRED report we use it somewhat differently than is commonly taught. The standard way to use the indicator is to register a buy signal when it moves below, and then above, 20 (the lowest 20% of closing prices in the last 14 days). A sell signal is when the indicator moves above, and then below 80 (the highest 80% of closes over the last 14 days).

The other line, %D, is a 3 period moving average of %K. We have found that the Stochastic is sensitive, so we advocate taking signals only in the direction of the trend. When looking at the standard FRED report chart, this would mean taking buy signals when the 5 is above the 20, and sell signals when the 5 is below the 20, but using a different technique to exit positions. The reason for this is the Stochastic is quite sensitive, and can give early indications, especially in new trends. It also can get "stuck" in the direction of trends, which connotes strength and not weakness. Another, preferred interpretation, is to use the indicator to measure risk. An example: buy in an uptrend, not when the stochastic is at 90% but rather wait until it falls below 50%, This way, even if a stock, commodity, or ETF does not give one of the "classic" signals, you can still use the indicator to assess risk, and leg into positions.

The FRED Report

Financial Research, Education & Data

The FRED Report (www.theFREDreport.com) was started to provide Financial Advisors and investors access to unbiased market research. The President of The Fred Report, **Fred Meissner, CMT** has been practicing Technical Market Analysis since 1983 and has worked in the research departments of Merrill Lynch and Robinson – Humphrey /Smith Barney. In addition he has served the public as a portfolio manager and financial advisor. We know the problems investors face and have devoted our career to helping find the best possible investments in all environments.

