

# ***Chartbook Review***

*(charts as of 01/27/2021)*

The FRED Report

4514 Chamblee-Dunwoody  
Dunwoody, GA 30338

Web:

[www.theFREDreport.com](http://www.theFREDreport.com)

Phone: 404-875-FRED

[fred@thefredreport.com](mailto:fred@thefredreport.com)

***By Fred Meissner, CMT***

**[www.theFREDreport.com](http://www.theFREDreport.com)**

# Chartbook: Stocks of Interest

Sym	Company	trkPrice	Sector	Industry
CARR	Carrier Global Corporation	36.17	Basic Materials Sector	Building Materials
LPX	Louisiana-Pacific Corp	38.25	Basic Materials Sector	Building Materials
DD	E.I. du Pont de Nemours and Com	77.62	Basic Materials Sector	Chemicals
FCX	Freeport-McMoran Inc	25.68	Basic Materials Sector	Copper
MTRN	Materion Corporation	67.50	Basic Materials Sector	Industrial Metals & Minerals
TMST	Timken Steel Corp	4.95	Basic Materials Sector	Steel
RL	Ralph Lauren Corp	100.66	Consumer Cyclical Sector	Apparel Manufacturing
GM	General Motors Company	49.25	Consumer Cyclical Sector	Auto Manufacturers
ADNT	Adient Plc	31.06	Consumer Cyclical Sector	Auto Parts
APTV	Aptiv	127.75	Consumer Cyclical Sector	Auto Parts
QS	QuantumScape	46.56	Consumer Cyclical Sector	Auto Parts
SIRI	Sirius XM Holdings Inc	6.86	Consumer Cyclical Sector	Broadcasting - TV
JWN	Nordstrom Inc	39.40	Consumer Cyclical Sector	Department Stores
DKNG	DraftKings Inc	54.28	Consumer Cyclical Sector	Gambling
LOW	Lowe's Companies Inc	167.80	Consumer Cyclical Sector	Home Improvement Stores
DS	Drive Shack Inc	3.21	Consumer Cyclical Sector	Leisure
TPR	Tapestry Inc	30.54	Consumer Cyclical Sector	Luxury Goods
DIS	The Walt Disney Company	162.45	Consumer Cyclical Sector	Media - Diversified
WGO	Winnebago Industries Inc	68.74	Consumer Cyclical Sector	Recreational Vehicles
CZR	Caesars Entertainment Corp	66.88	Consumer Cyclical Sector	Resorts & Casinos
RRR	Red Rock Resorts	23.99	Consumer Cyclical Sector	Resorts & Casinos
WYNN	Wynn Resorts Ltd	100.70	Consumer Cyclical Sector	Resorts & Casinos
CVNA	Carvana Co	236.39	Consumer Cyclical Sector	Specialty Retail
OSTK	Overstock.com Inc	87.02	Consumer Cyclical Sector	Specialty Retail
SYY	Sysco Corp	72.14	Consumer Defensive Sector	Food Distribution
CL	Colgate-Palmolive Co	78.02	Consumer Defensive Sector	Household & Personal Products
BLK	Blackrock Incorporated	697.86	Financial Services Sector	Asset Management
SCHW	Charles Schwab Corp	53.23	Financial Services Sector	Capital Markets
DFS	Discover Financial Services	82.46	Financial Services Sector	Credit Services
LX	LexinFintech Holdings Ltd	7.45	Financial Services Sector	Credit Services

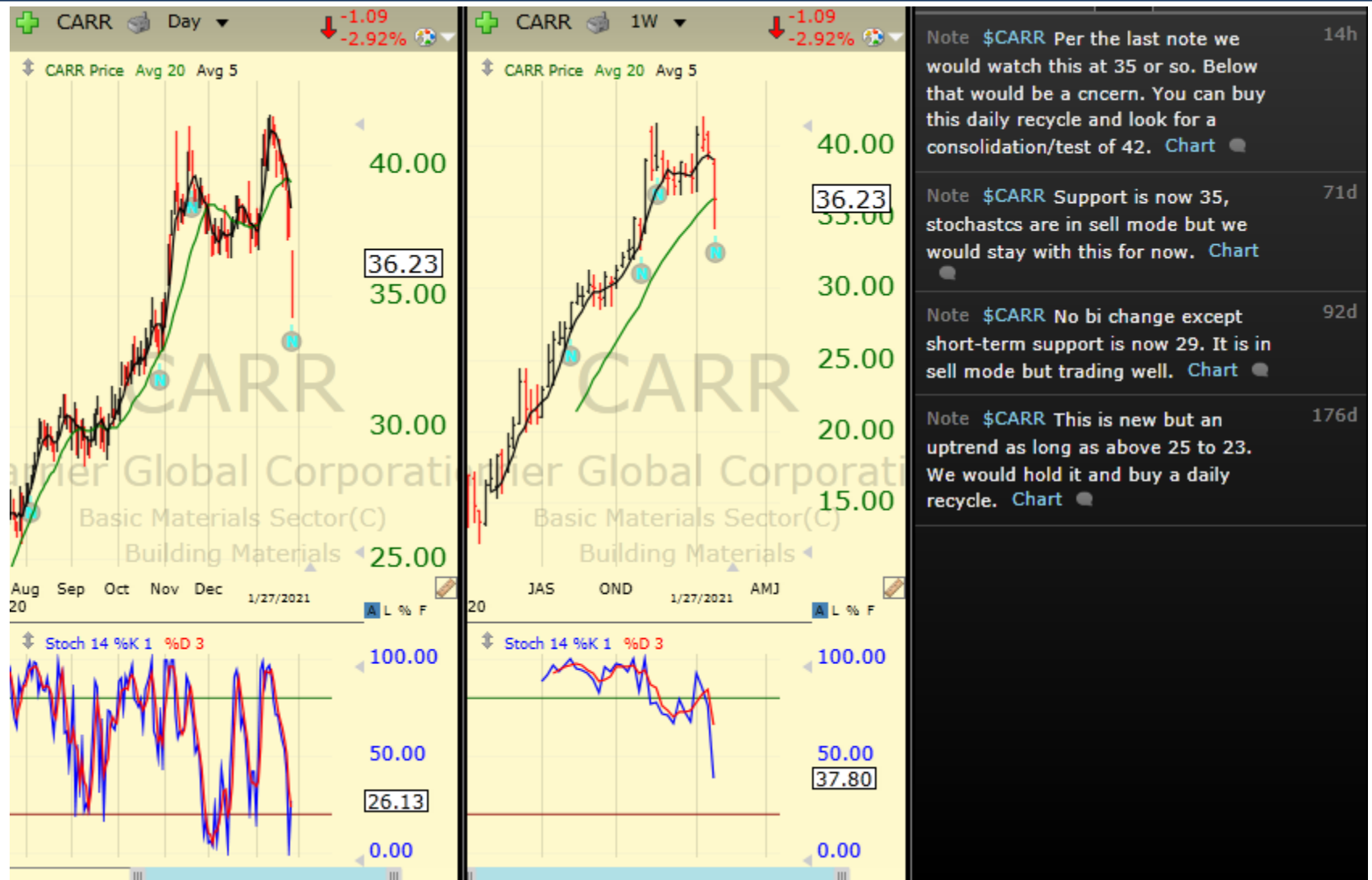
# Chartbook: Stocks of Interest

Sym	Company	trkPrice	Sector ▲	Industry
MA	Mastercard Incorporated	315.40	Financial Services Sector	Credit Services
PYPL	PayPal Holdings Inc	229.65	Financial Services Sector	Credit Services
ALL	Allstate Corporation	110.67	Financial Services Sector	Insurance - Property & Casualty
RKT	Rocket Companies Inc	23.01	Financial Services Sector	Specialty Finance
BMRN	Biomarin Pharmaceuticals	83.19	Healthcare Sector	Biotechnology
SAGE	Sage Therapeutics Inc	80.39	Healthcare Sector	Biotechnology
SGEN	Seagen Inc	162.83	Healthcare Sector	Biotechnology
SRPT	Sarepta Therapeutics Inc	90.37	Healthcare Sector	Biotechnology
VRTX	Vertex Pharmaceuticals Inc	225.44	Healthcare Sector	Biotechnology
DGX	Quest Diagnostics Inc	125.46	Healthcare Sector	Diagnostics & Research
DXCM	DexCom Inc	349.59	Healthcare Sector	Diagnostics & Research
FLDM	Fluidigm Corporation	6.10	Healthcare Sector	Diagnostics & Research
TMO	Thermo Fisher Scientific Inc	482.56	Healthcare Sector	Diagnostics & Research
ABBV	AbbVie Inc	102.75	Healthcare Sector	Drug Manufacturers - Major
SUPN	Supernus Pharmaceuticals Inc	30.93	Healthcare Sector	Drug Manufacturers - Specialty & Generic
DCTH	Delcath Systems Inc	16.72	Healthcare Sector	Medical Devices
OMI	Owens & Minor Inc	26.90	Healthcare Sector	Medical Distribution
BA	Boeing Co	194.40	Industrials Sector	Aerospace & Defense
RTX	Raytheon Technologies Corporatio	65.66	Industrials Sector	Aerospace & Defense
SPCE	Virgin Galactic Holdings, Inc	46.45	Industrials Sector	Aerospace & Defense
TDG	TransDigm Group Inc	519.51	Industrials Sector	Aerospace & Defense
ETN	Eaton Corporation, PLC	114.93	Industrials Sector	Diversified Industrials
ITW	Illinois Tool Works Inc	195.06	Industrials Sector	Diversified Industrials
TT	Trane Technologies	139.40	Industrials Sector	Diversified Industrials
CAT	Caterpillar Inc	180.46	Industrials Sector	Farm & Heavy Construction Machinery
DE	Deere & Co	280.98	Industrials Sector	Farm & Heavy Construction Machinery
HV	Hyster-Yale Materials Handling, In	90.32	Industrials Sector	Farm & Heavy Construction Machinery
WCC	WESCO International Inc	75.77	Industrials Sector	Industrial Distribution
CYRX	CryoPort Inc	69.11	Industrials Sector	Integrated Shipping & Logistics
UNP	Union Pacific Corp	194.41	Industrials Sector	Railroads

# Chartbook: Stocks of Interest

Sym	Company	trkPrice	Sector ▲	Industry
WM	Waste Management Inc	110.91	Industrials Sector	Waste Management
AMT	American Tower Corp	228.66	Real Estate Sector	REIT - Diversified
SKT	Tanger Factory Outlet Centers Inc	17.97	Real Estate Sector	REIT - Retail
NOK	Nokia Corp Ads	6.63	Technology Sector	Communication Equipment
VIAV	Viavi Solutions Inc	16.49	Technology Sector	Communication Equipment
SNE	Sony Corporation ADS	96.94	Technology Sector	Consumer Electronics
FISV	Fiserv Inc	103.29	Technology Sector	Information Technology Services
COHU	Cohu Inc	41.95	Technology Sector	Semiconductor Equipment & Materials
MU	Micron Technology Inc	75.10	Technology Sector	Semiconductors
NXPI	NXP Semiconductors NV	160.95	Technology Sector	Semiconductors
TSM	Taiwan Semiconductor Manufactu	121.73	Technology Sector	Semiconductors
TXN	Texas Instruments Inc	163.38	Technology Sector	Semiconductors
DOCU	DocuSign Inc	225.64	Technology Sector	Software - Application
DT	Dynatrace Inc	40.08	Technology Sector	Software - Application
HUBS	HubSpot Inc	350.42	Technology Sector	Software - Application
NCNO	nCino Inc	73.70	Technology Sector	Software - Application
RNG	RingCentral, Inc.	357.85	Technology Sector	Software - Application
SHOP	Shopify Inc	1090.62	Technology Sector	Software - Application
UBER	Uber Technologies	48.08	Technology Sector	Software - Application
ZI	ZoomInfo Technologies Inc	49.79	Technology Sector	Software - Application
BB	BlackBerry	24.66	Technology Sector	Software - Infrastructure
MSFT	Microsoft Corp	232.82	Technology Sector	Software - Infrastructure
SQ	Square	202.44	Technology Sector	Software - Infrastructure
CSIQ	Canadian Solar Inc	58.91	Technology Sector	Solar
SEDG	SolarEdge Technologies	285.36	Technology Sector	Solar
DIA	SPDR Dow Jones Industrial Avera	303.12		
SMH	VanEck Vectors Semiconductor ET	226.06		
YAMCY	Yamaha Corp.	57.7900		

# Chartbook: Stocks of Interest



# Chartbook: Stocks of Interest



# Chartbook: Stocks of Interest

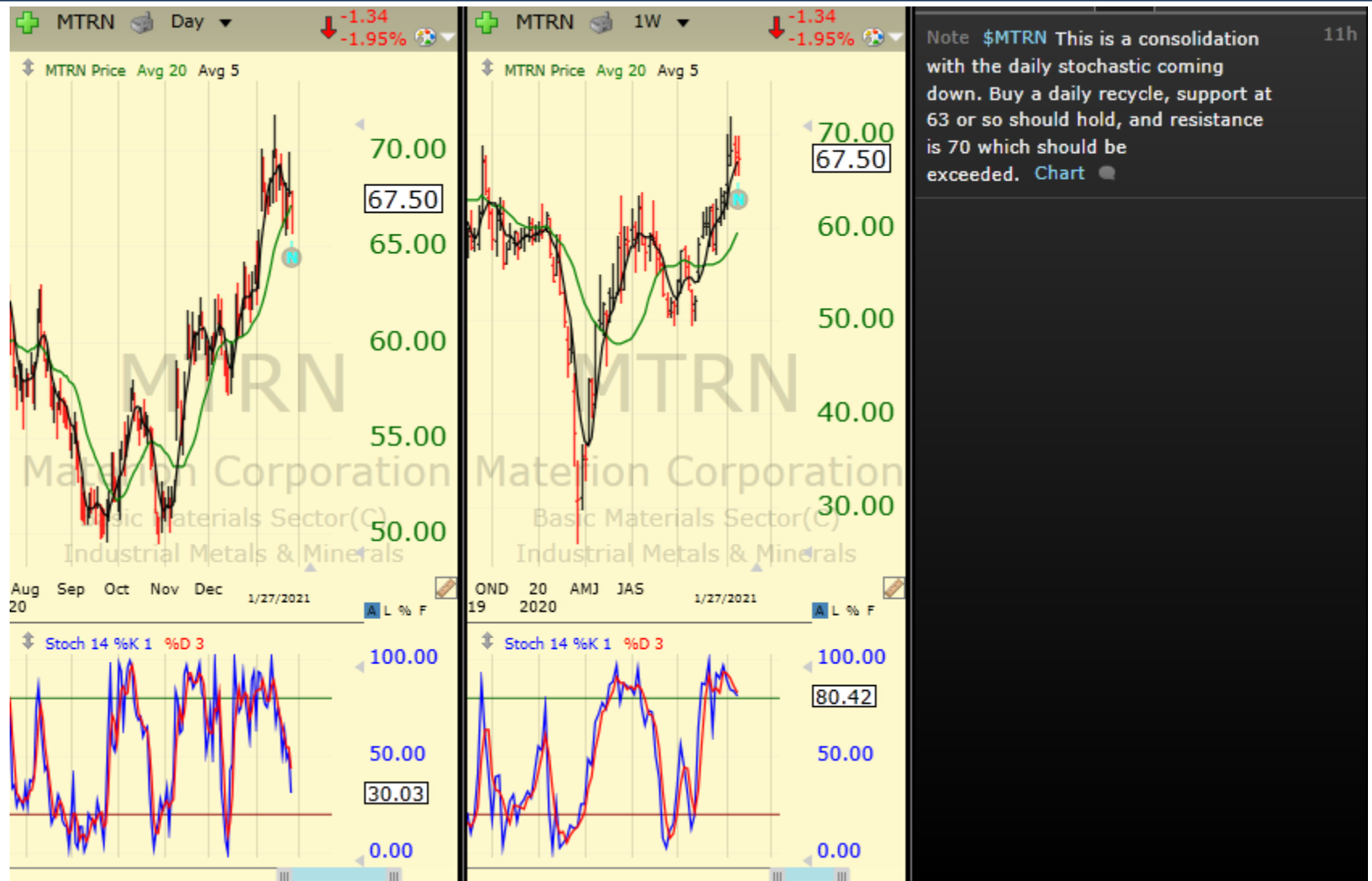


# Chartbook: Stocks of Interest

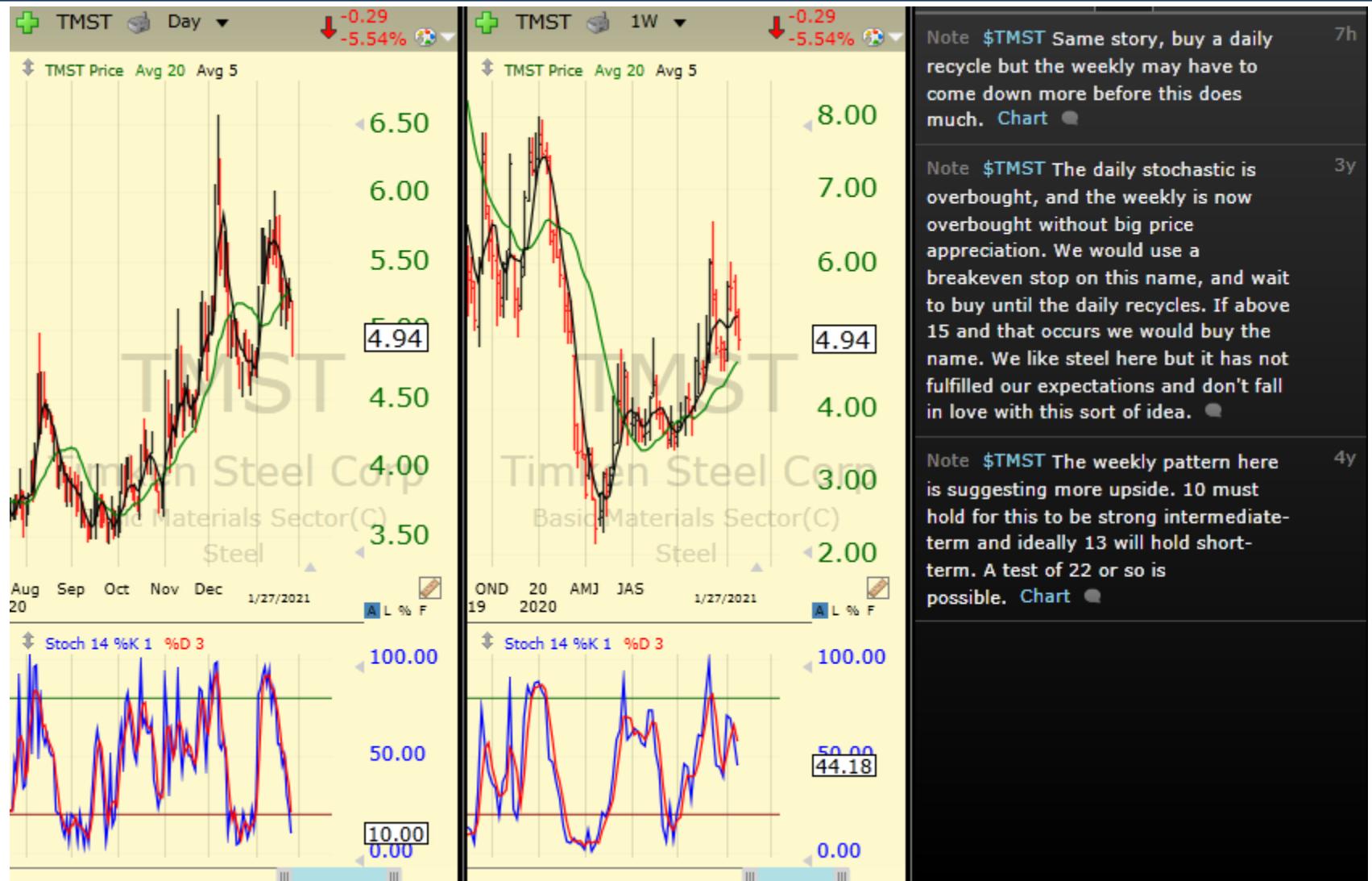




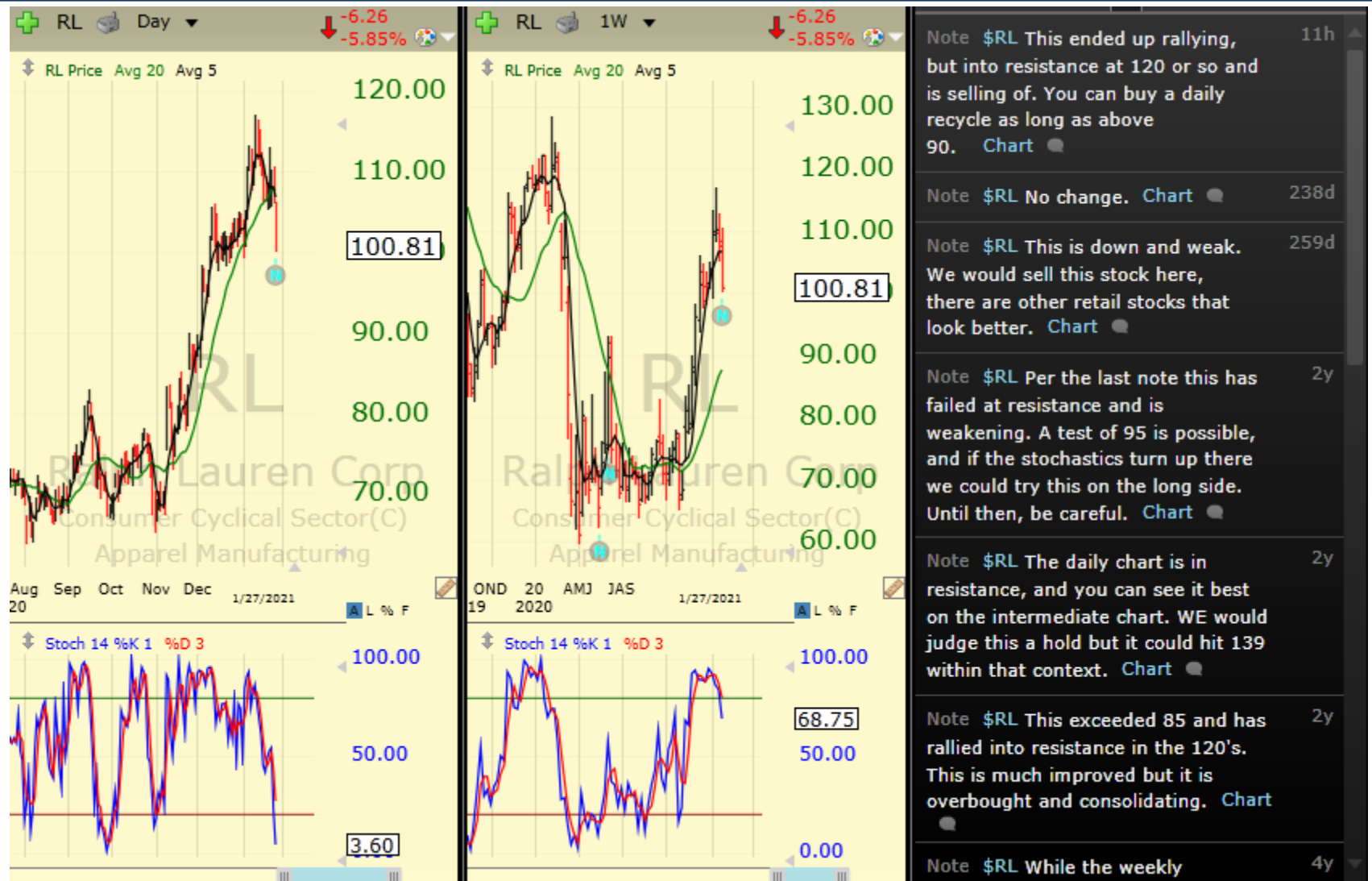
# Chartbook: Stocks of Interest



# Chartbook: Stocks of Interest



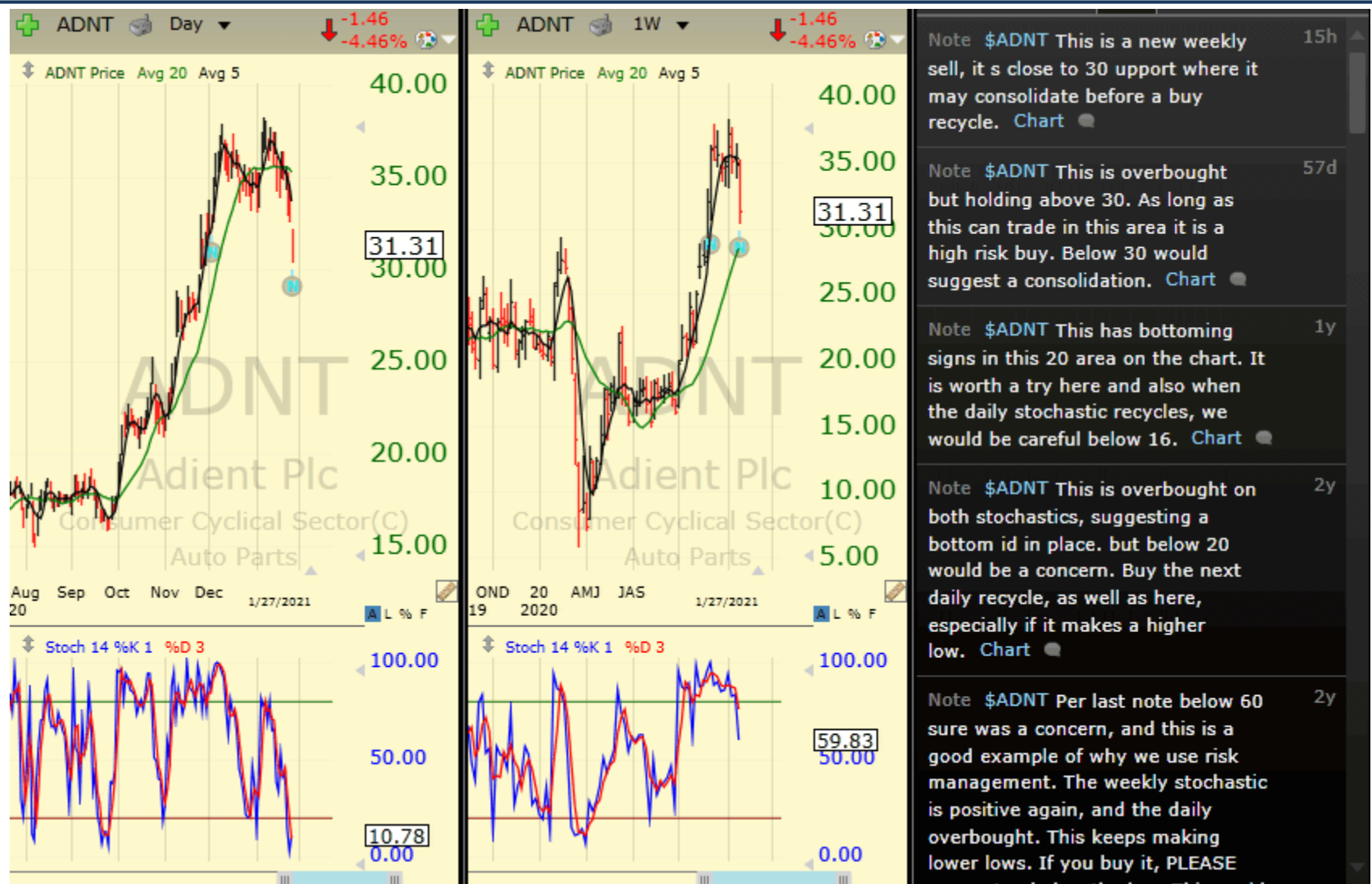
# Chartbook: Stocks of Interest



# Chartbook: Stocks of Interest



# Chartbook: Stocks of Interest



# Chartbook: Stocks of Interest



# Chartbook: Stocks of Interest



# Chartbook: Stocks of Interest





# Chartbook: Stocks of Interest



Note \$JWN Per the last note, traders should have sold this. It is in resistance. If you want to buy it, buy it now, do not wait for a recycle, but be ready to add on a daily recycle. It could consolidate in the 39 to 35 area, although it is strong enough to advance from here. [Chart](#)

Note \$JWN This is now a favorite stock in the Sector Review. It has resistance in 35 to 36 area where it should pause but it remains a strong retailer for investors. Traders should sell at 34 if it hits there. [Chart](#)

Note \$JWN This stock is overbought and in a downtrend, so we would be a tad careful. It needs to get above 40 to be repaired. Below 25 is a sale, wait for the stochastics to come down to be a safer buy. [Chart](#)

Note \$JWN A potential buy if the weekly can improve. Earnings from Macy's tomorrow should tell us a great deal about future action of the department stores. Earnings from JWN are due tomorrow after the close. [Chart](#)

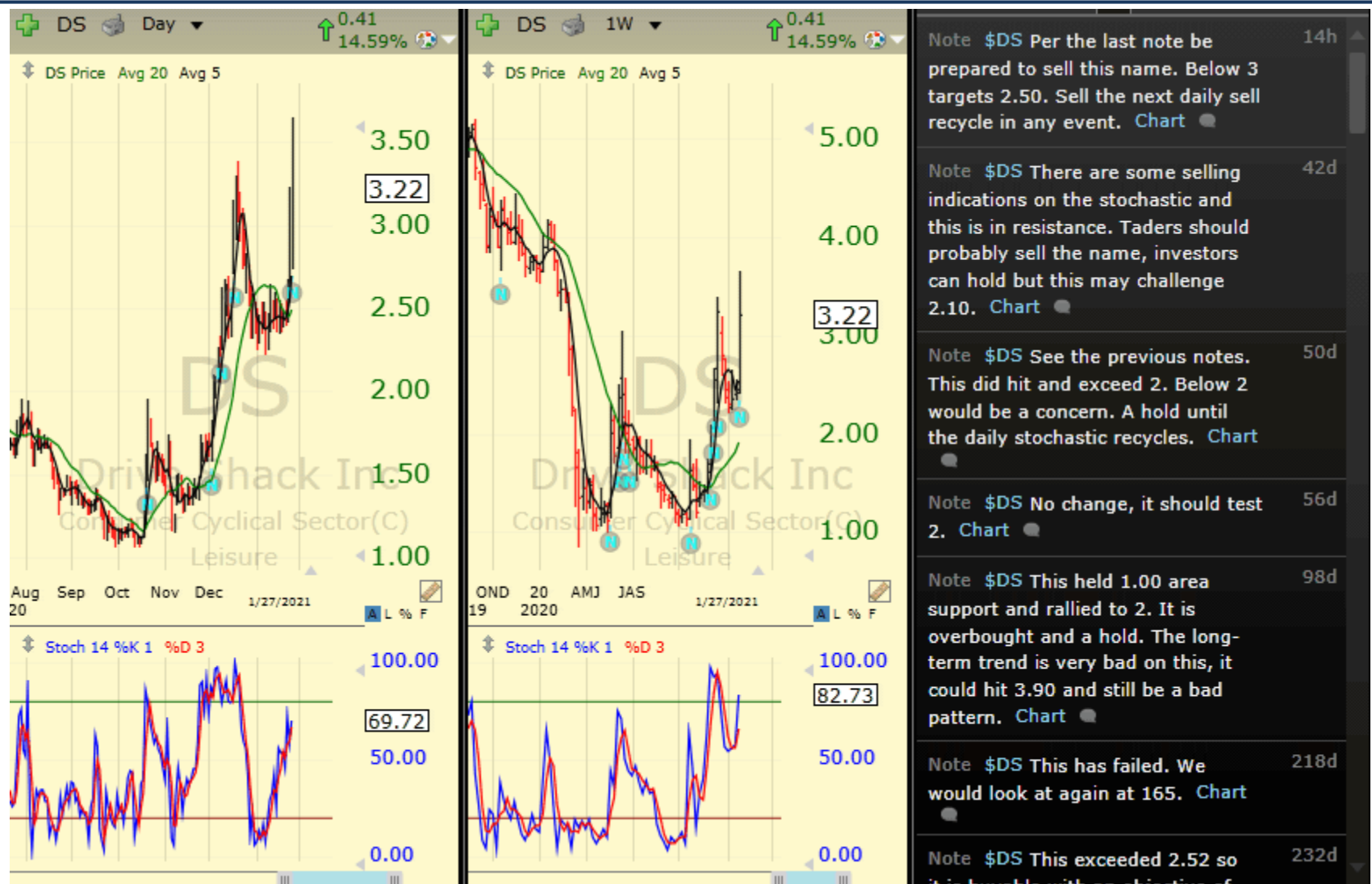
# Chartbook: Stocks of Interest



# Chartbook: Stocks of Interest



# Chartbook: Stocks of Interest



# Chartbook: Stocks of Interest



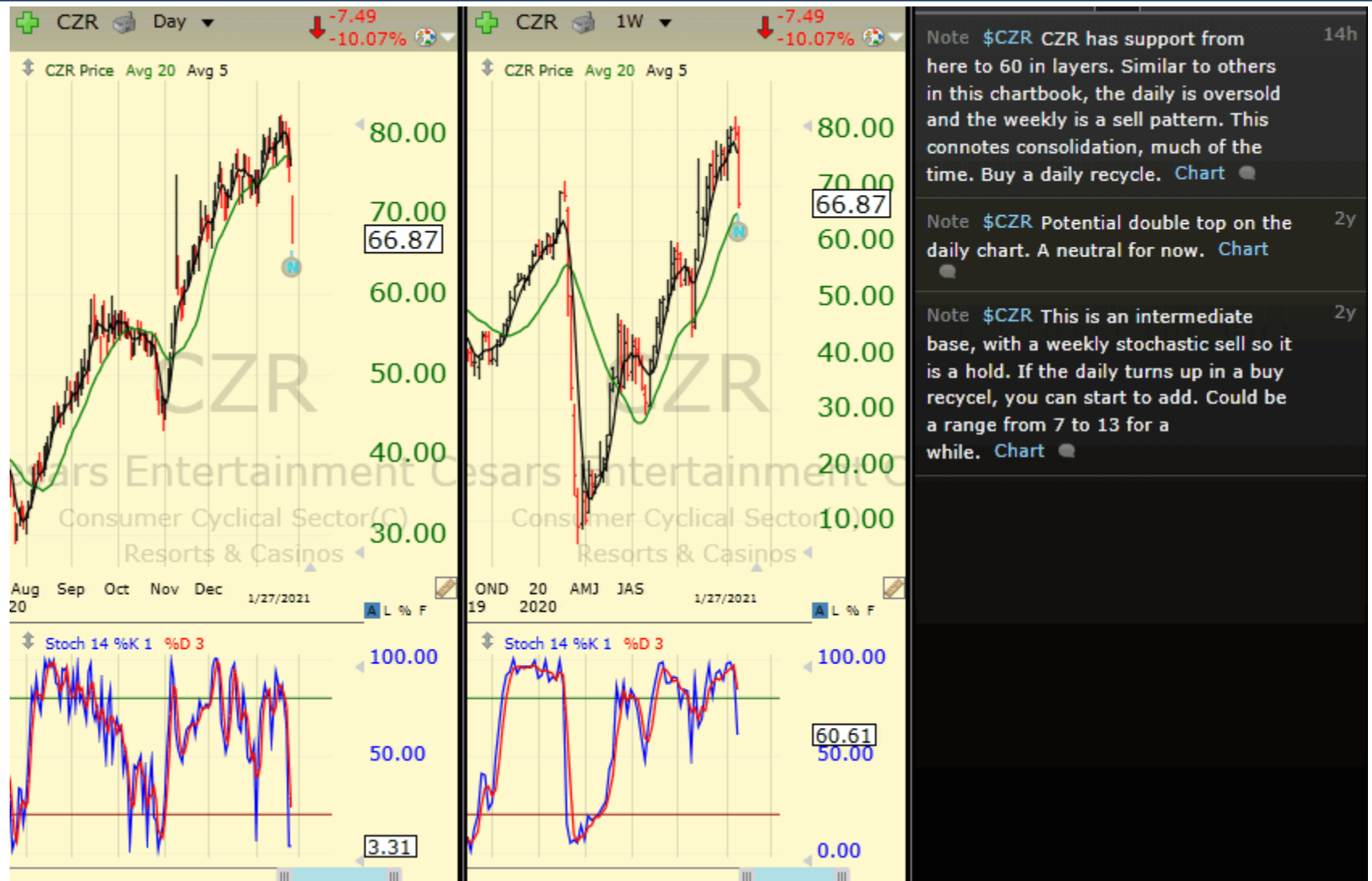
# Chartbook: Stocks of Interest



# Chartbook: Stocks of Interest

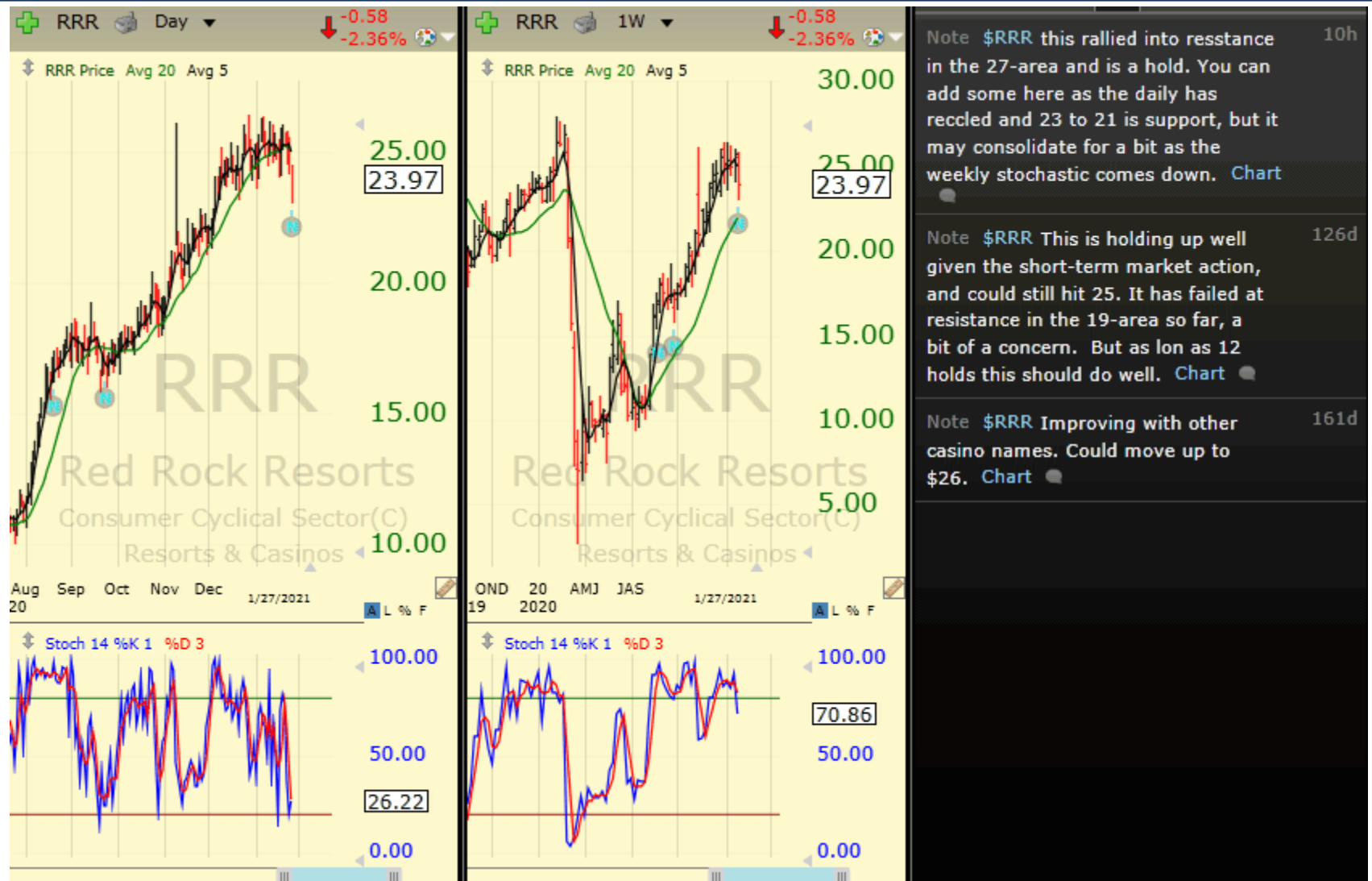


# Chartbook: Stocks of Interest





# Chartbook: Stocks of Interest



# Chartbook: Stocks of Interest



# Chartbook: Stocks of Interest



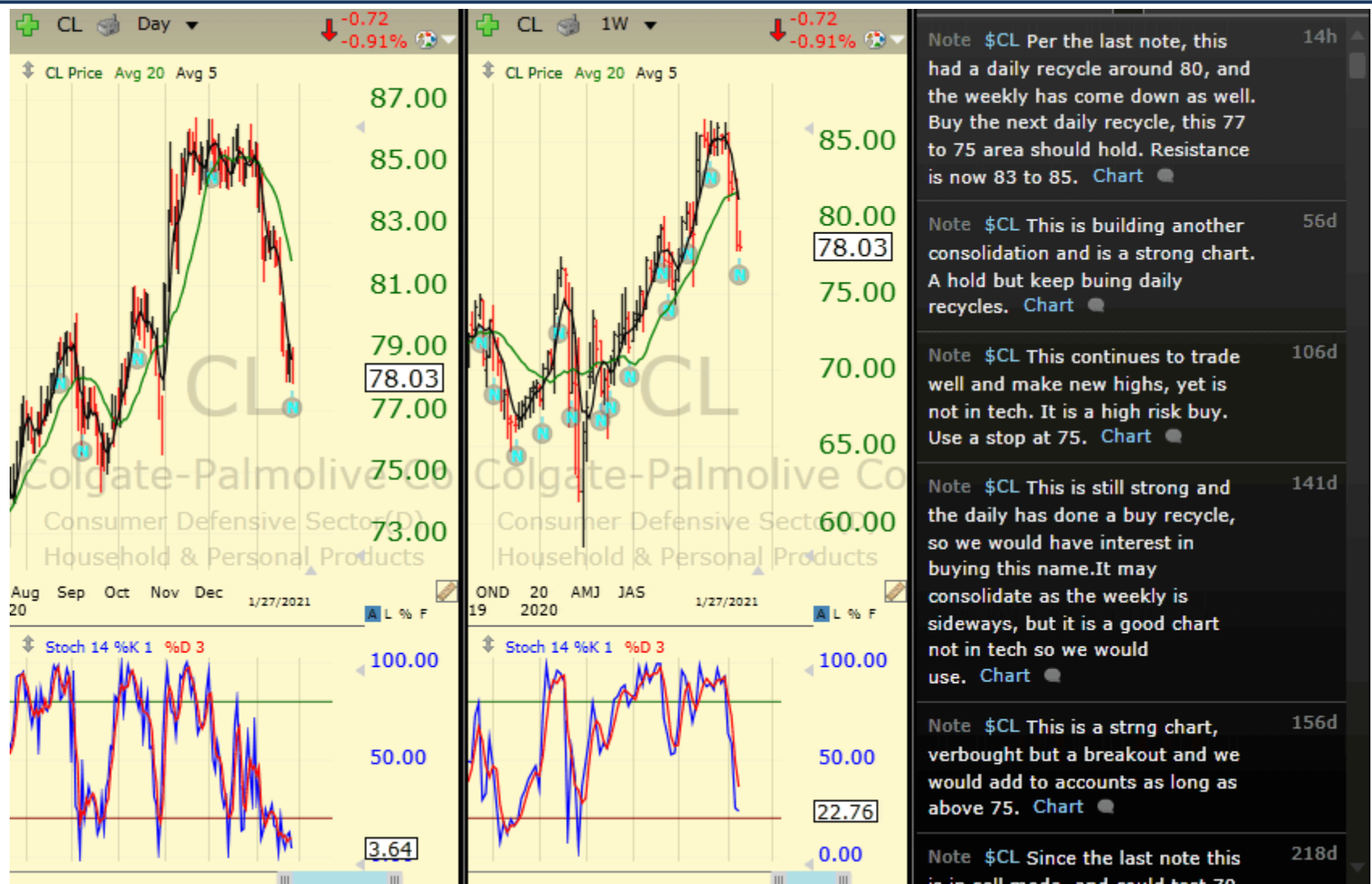
# Chartbook: Stocks of Interest



# Chartbook: Stocks of Interest



# Chartbook: Stocks of Interest



# Chartbook: Stocks of Interest



# Chartbook: Stocks of Interest





# Chartbook: Stocks of Interest



# Chartbook: Stocks of Interest



# Chartbook: Stocks of Interest



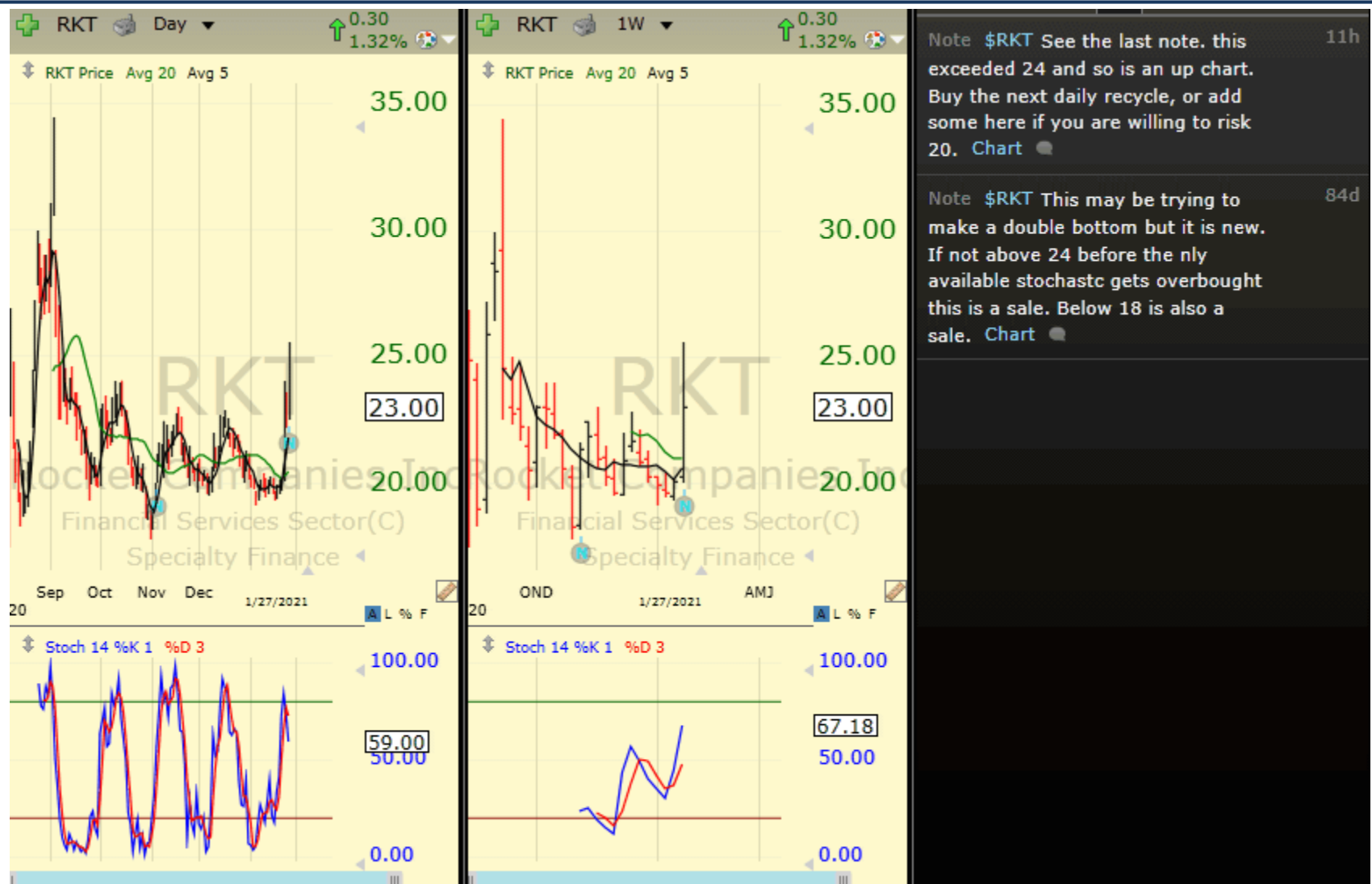
# Chartbook: Stocks of Interest



# Chartbook: Stocks of Interest



# Chartbook: Stocks of Interest



# Chartbook: Stocks of Interest



# Chartbook: Stocks of Interest





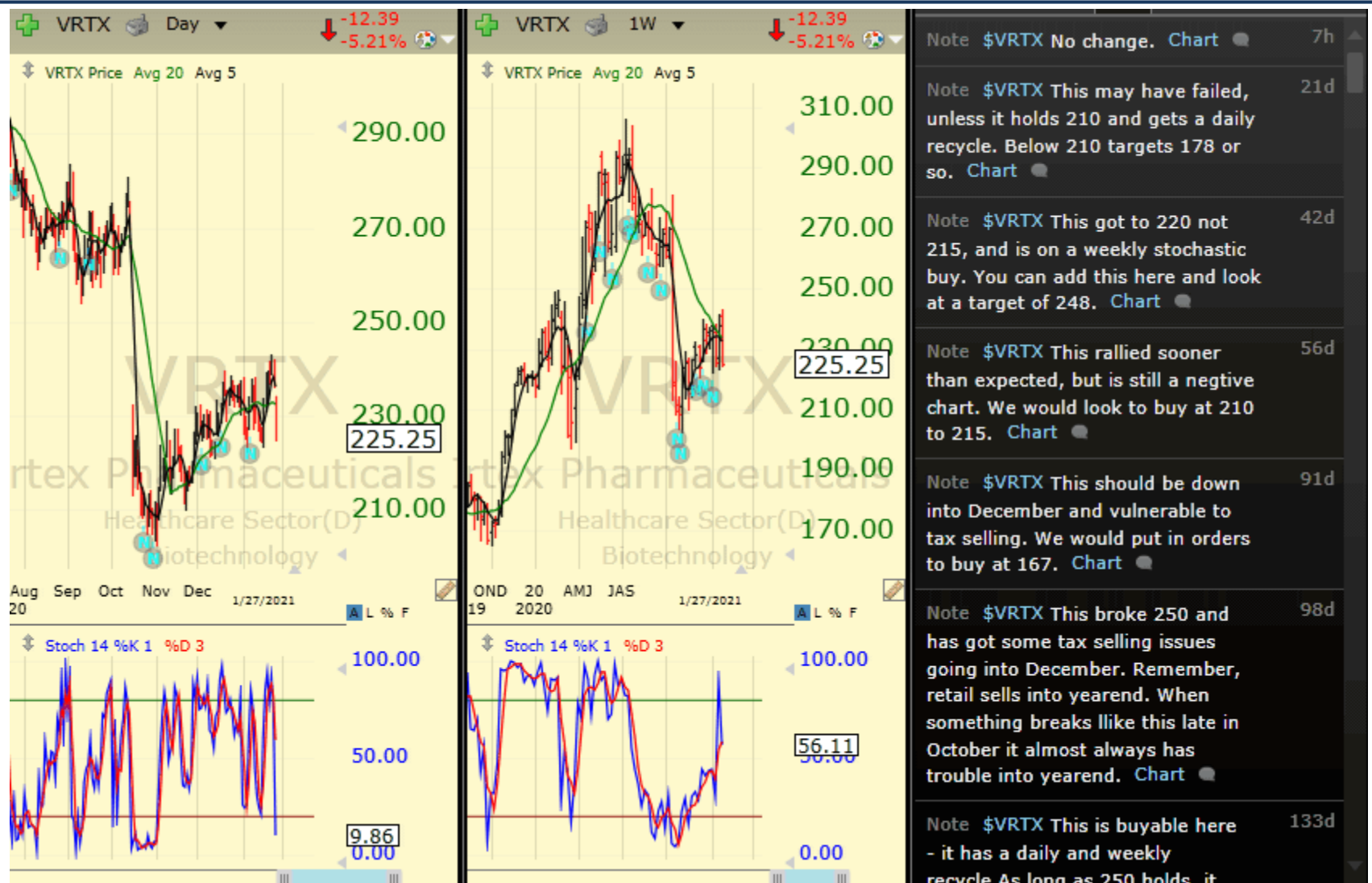
# Chartbook: Stocks of Interest



# Chartbook: Stocks of Interest



# Chartbook: Stocks of Interest



# Chartbook: Stocks of Interest



# Chartbook: Stocks of Interest



# Chartbook: Stocks of Interest



# Chartbook: Stocks of Interest



# Chartbook: Stocks of Interest





# Chartbook: Stocks of Interest



# Chartbook: Stocks of Interest



# Chartbook: Stocks of Interest



# Chartbook: Stocks of Interest



# Chartbook: Stocks of Interest



# Chartbook: Stocks of Interest



# Chartbook: Stocks of Interest



# Chartbook: Stocks of Interest

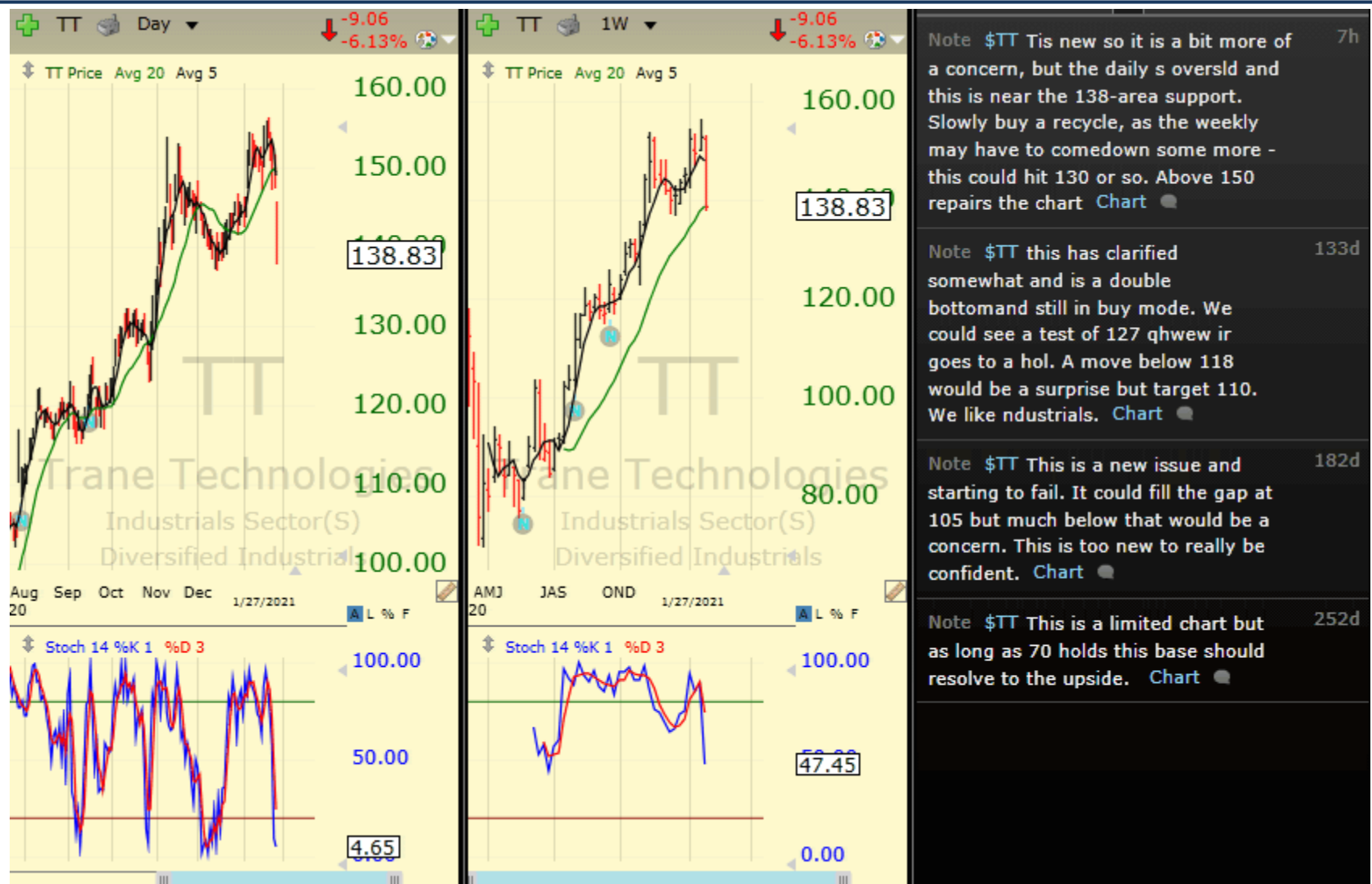




# Chartbook: Stocks of Interest



# Chartbook: Stocks of Interest



# Chartbook: Stocks of Interest



# Chartbook: Stocks of Interest



# Chartbook: Stocks of Interest



# Chartbook: Stocks of Interest



# Chartbook: Stocks of Interest



# Chartbook: Stocks of Interest





# Chartbook: Stocks of Interest



# Chartbook: Stocks of Interest



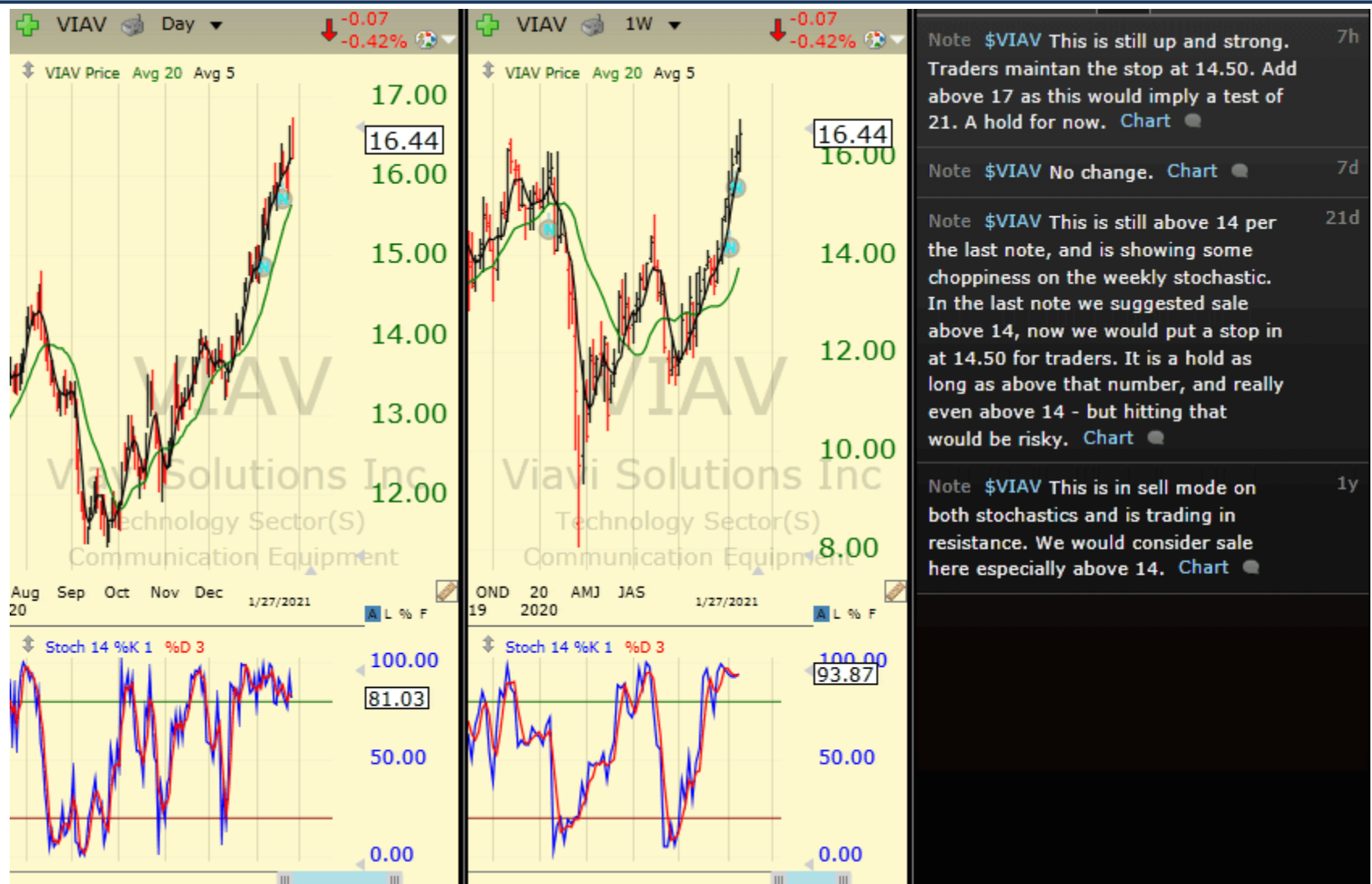
# Chartbook: Stocks of Interest



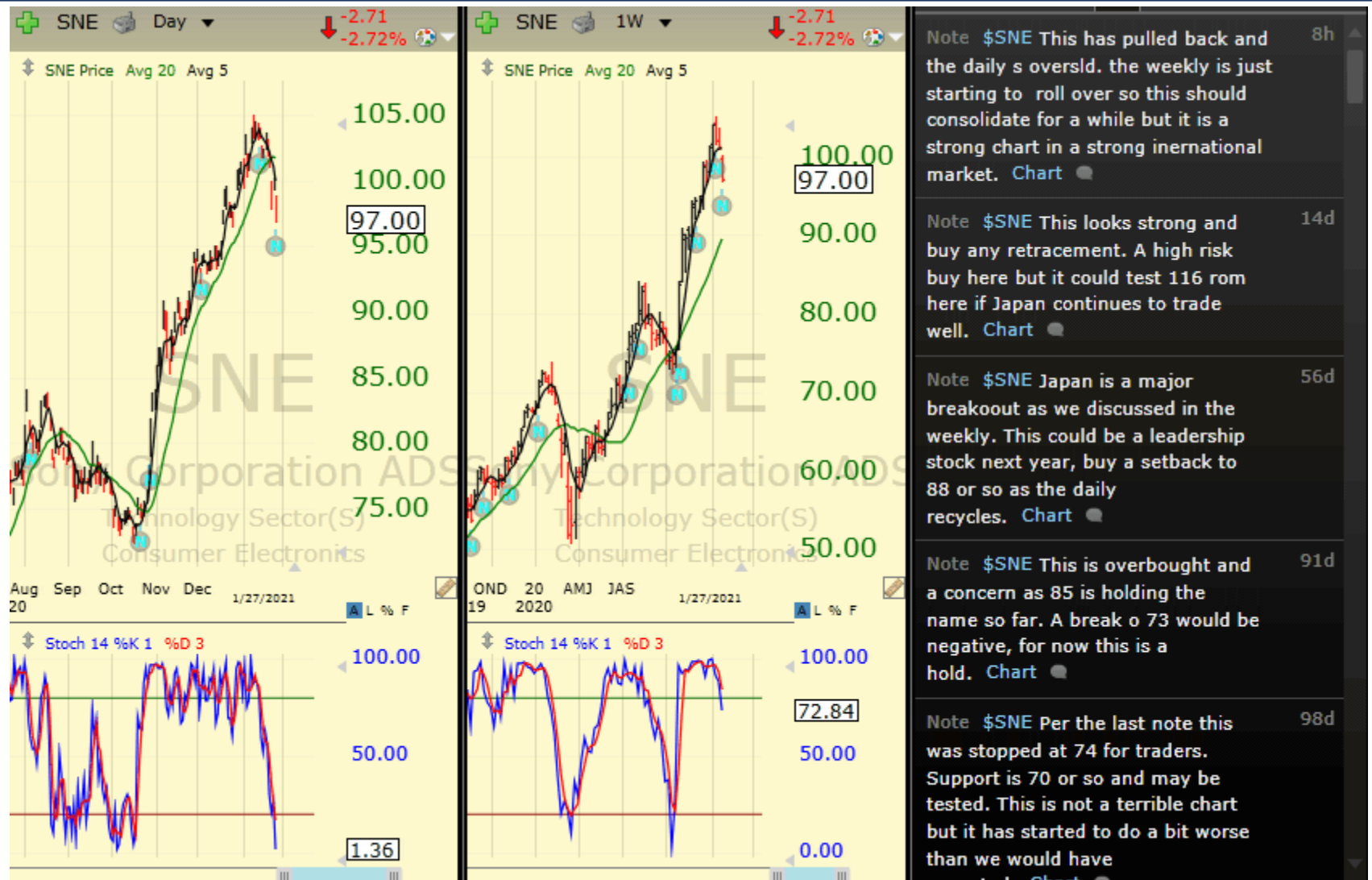
# Chartbook: Stocks of Interest



# Chartbook: Stocks of Interest



# Chartbook: Stocks of Interest



# Chartbook: Stocks of Interest

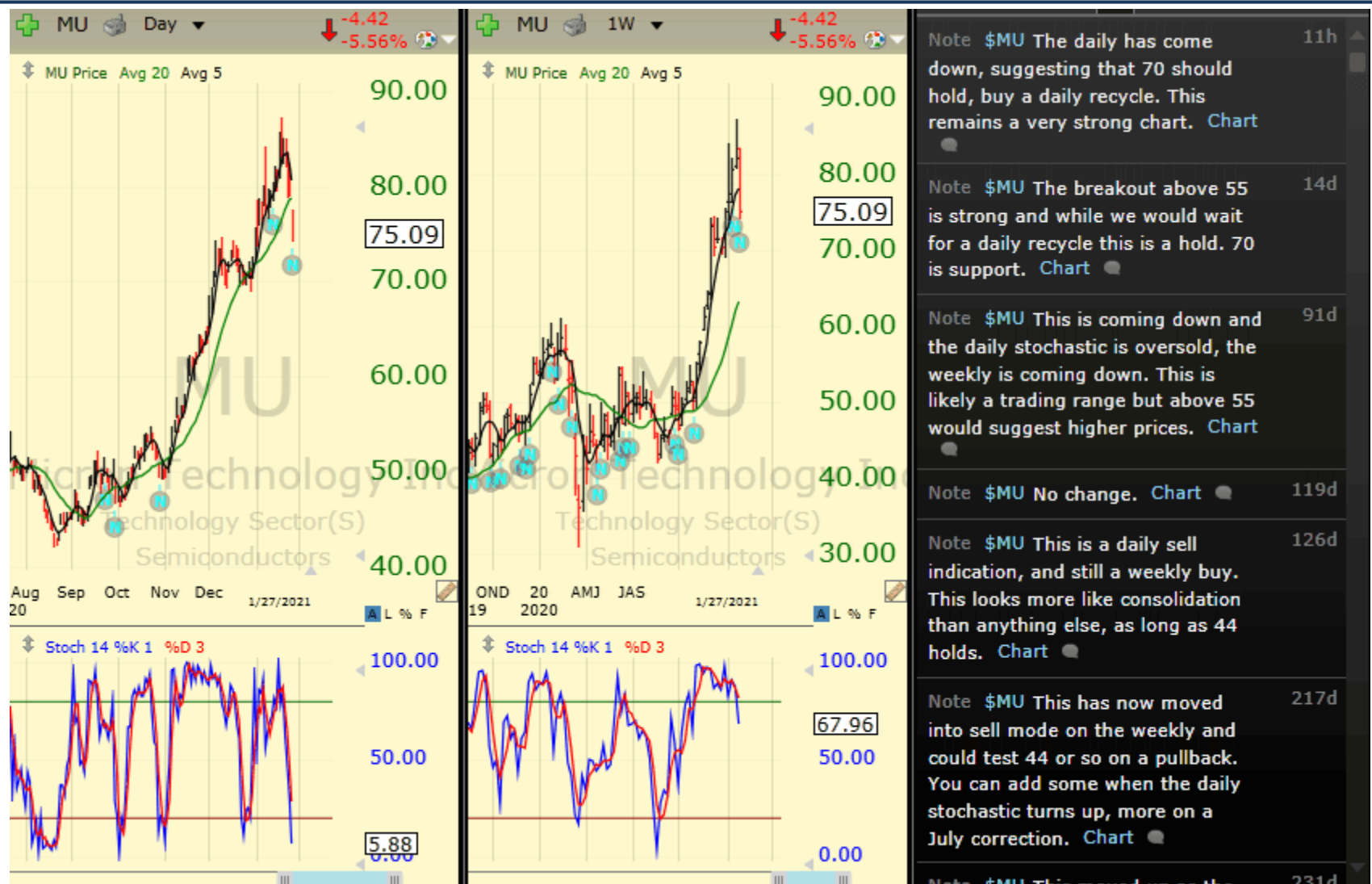


# Chartbook: Stocks of Interest





# Chartbook: Stocks of Interest



# Chartbook: Stocks of Interest



# Chartbook: Stocks of Interest



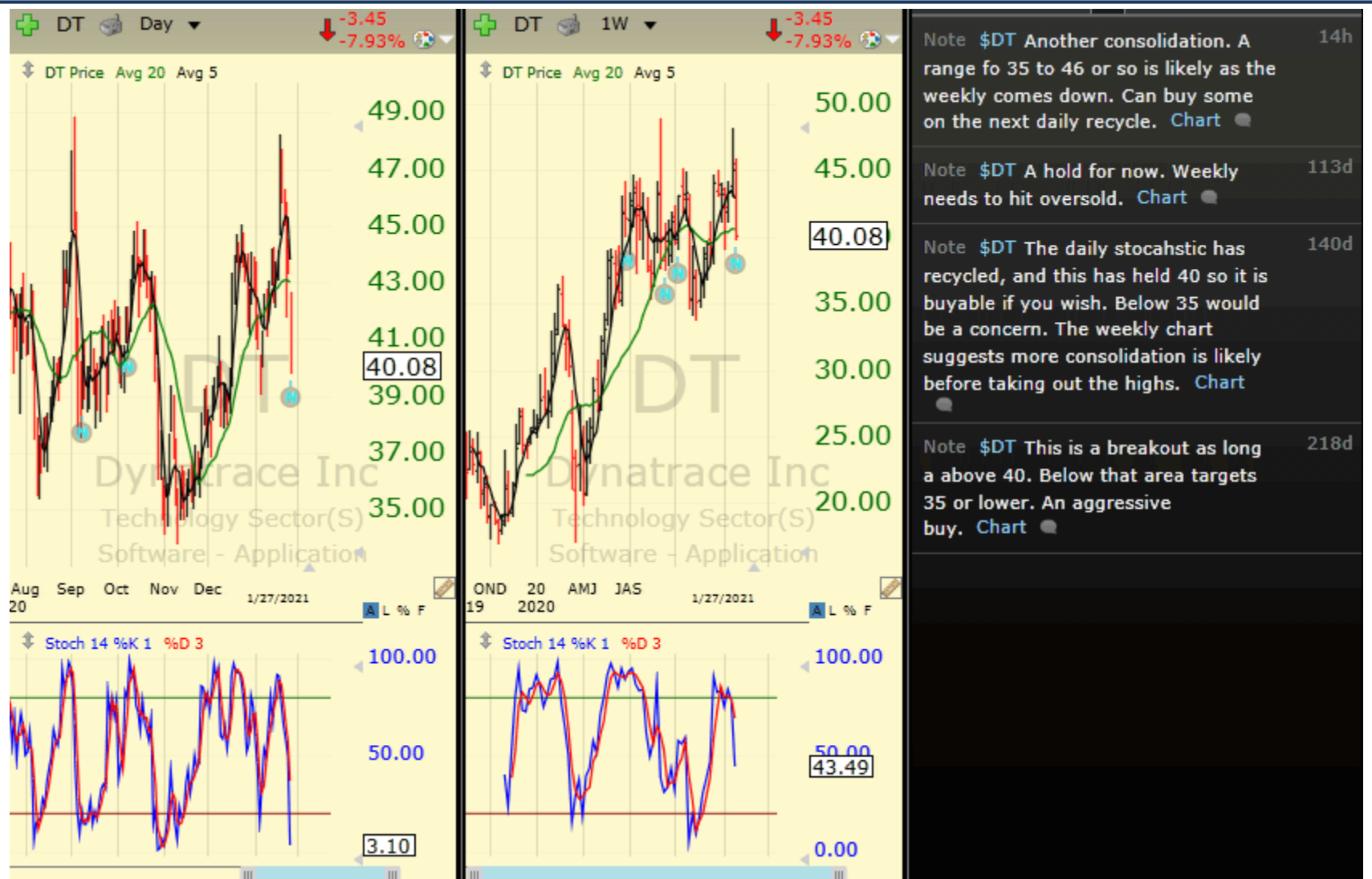
# Chartbook: Stocks of Interest



# Chartbook: Stocks of Interest



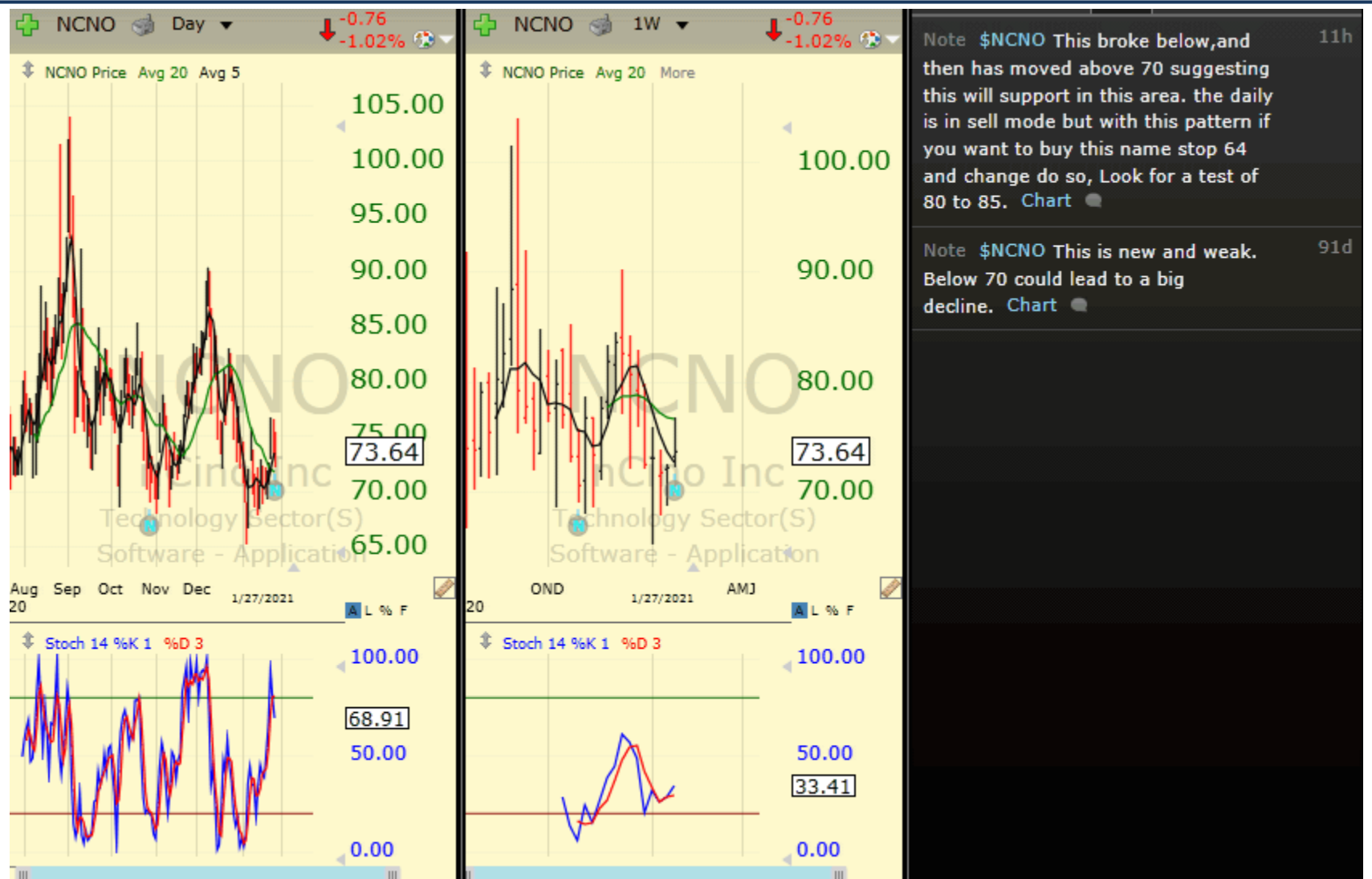
# Chartbook: Stocks of Interest



# Chartbook: Stocks of Interest



# Chartbook: Stocks of Interest





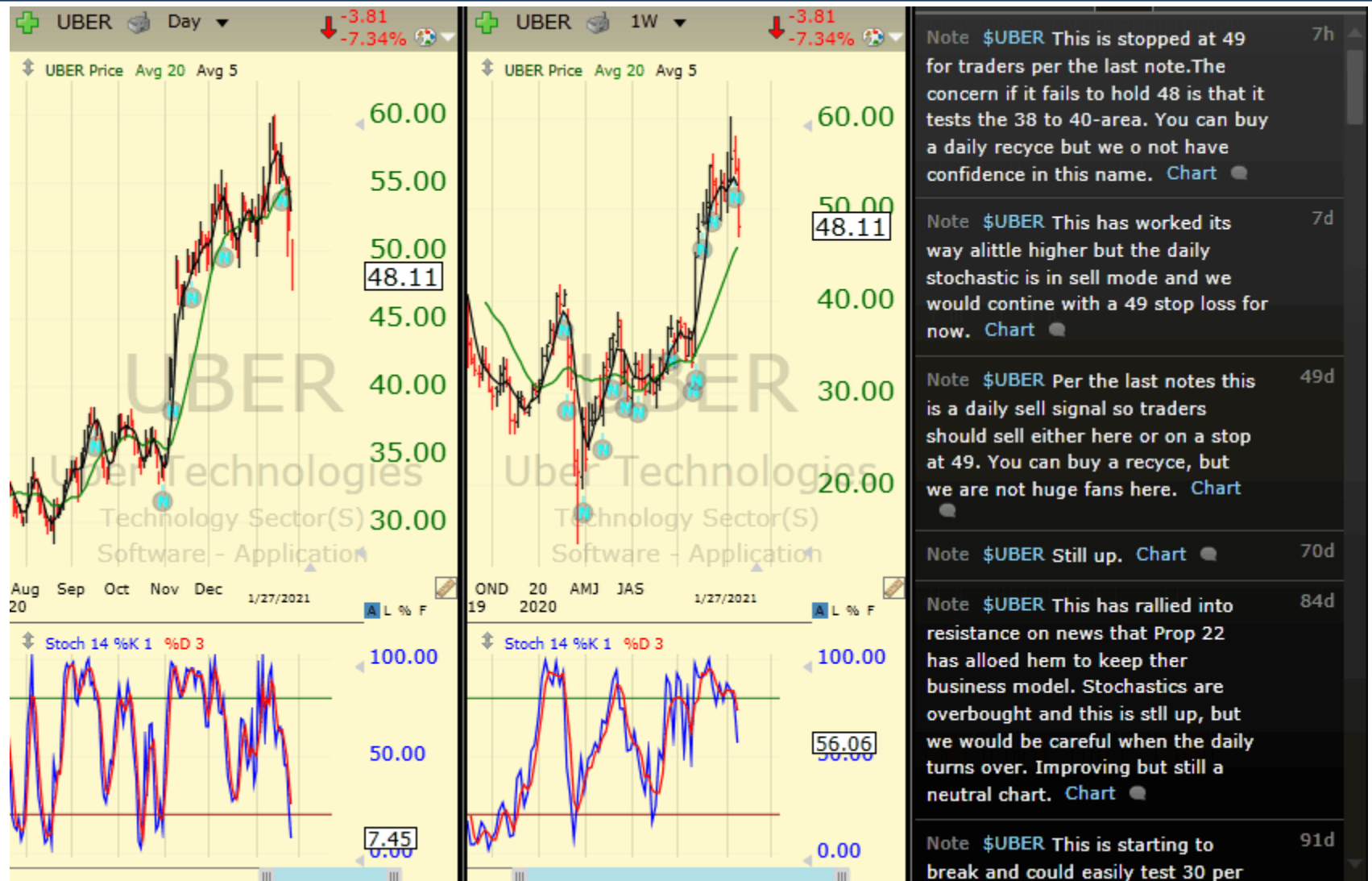
# Chartbook: Stocks of Interest



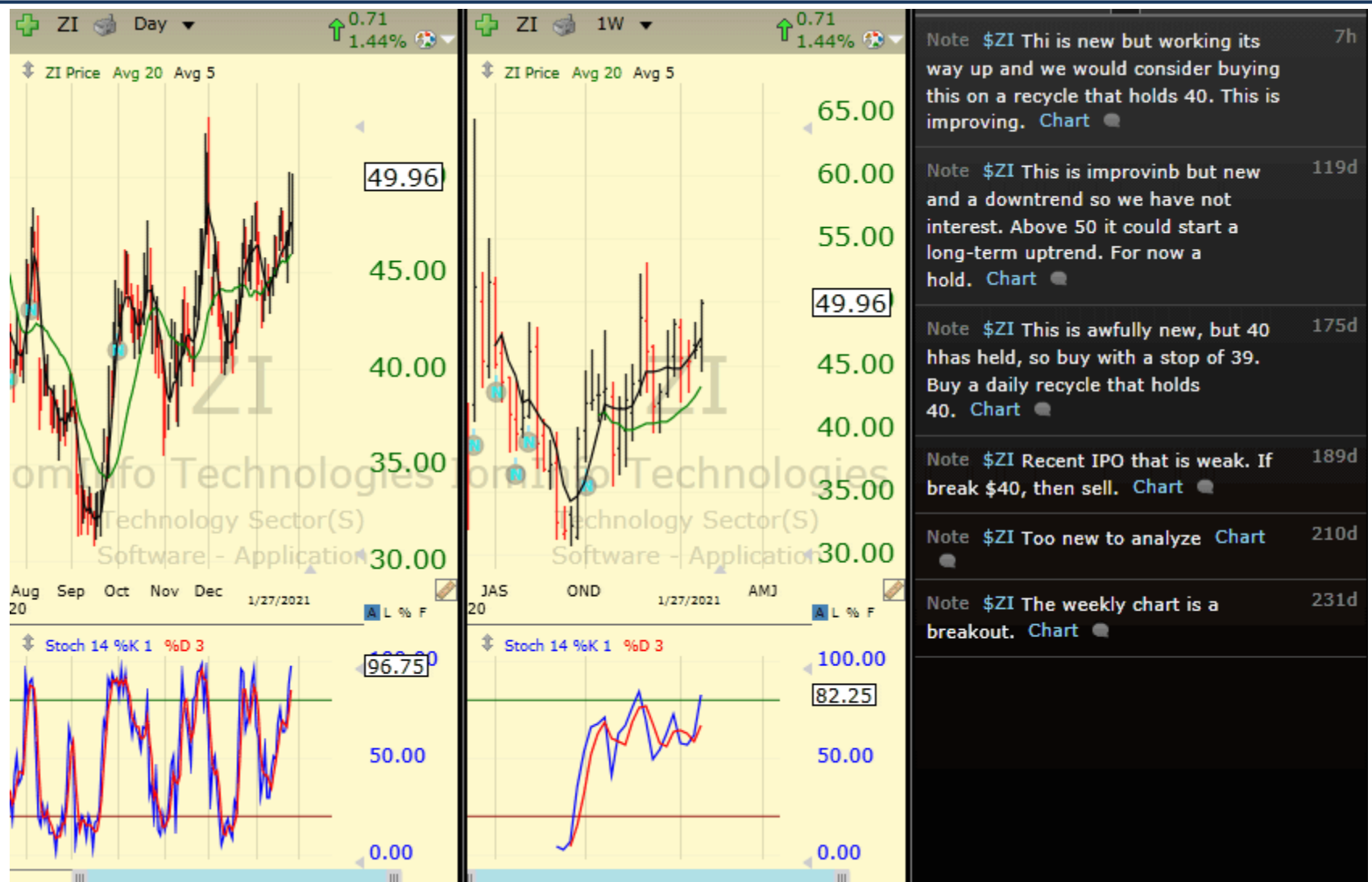
# Chartbook: Stocks of Interest



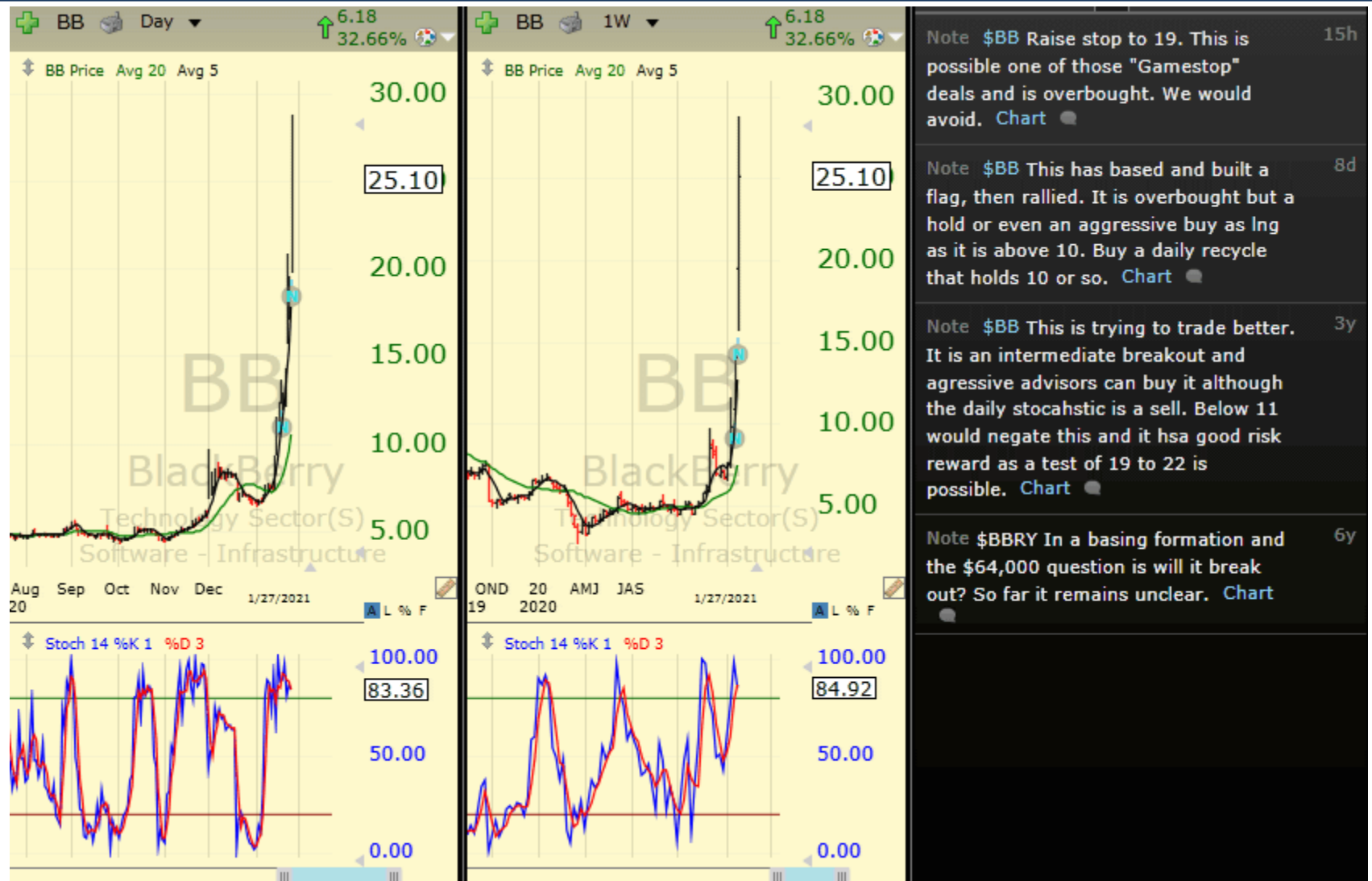
# Chartbook: Stocks of Interest



# Chartbook: Stocks of Interest



# Chartbook: Stocks of Interest



# Chartbook: Stocks of Interest



# Chartbook: Stocks of Interest



# Chartbook: Stocks of Interest





# Chartbook: Stocks of Interest



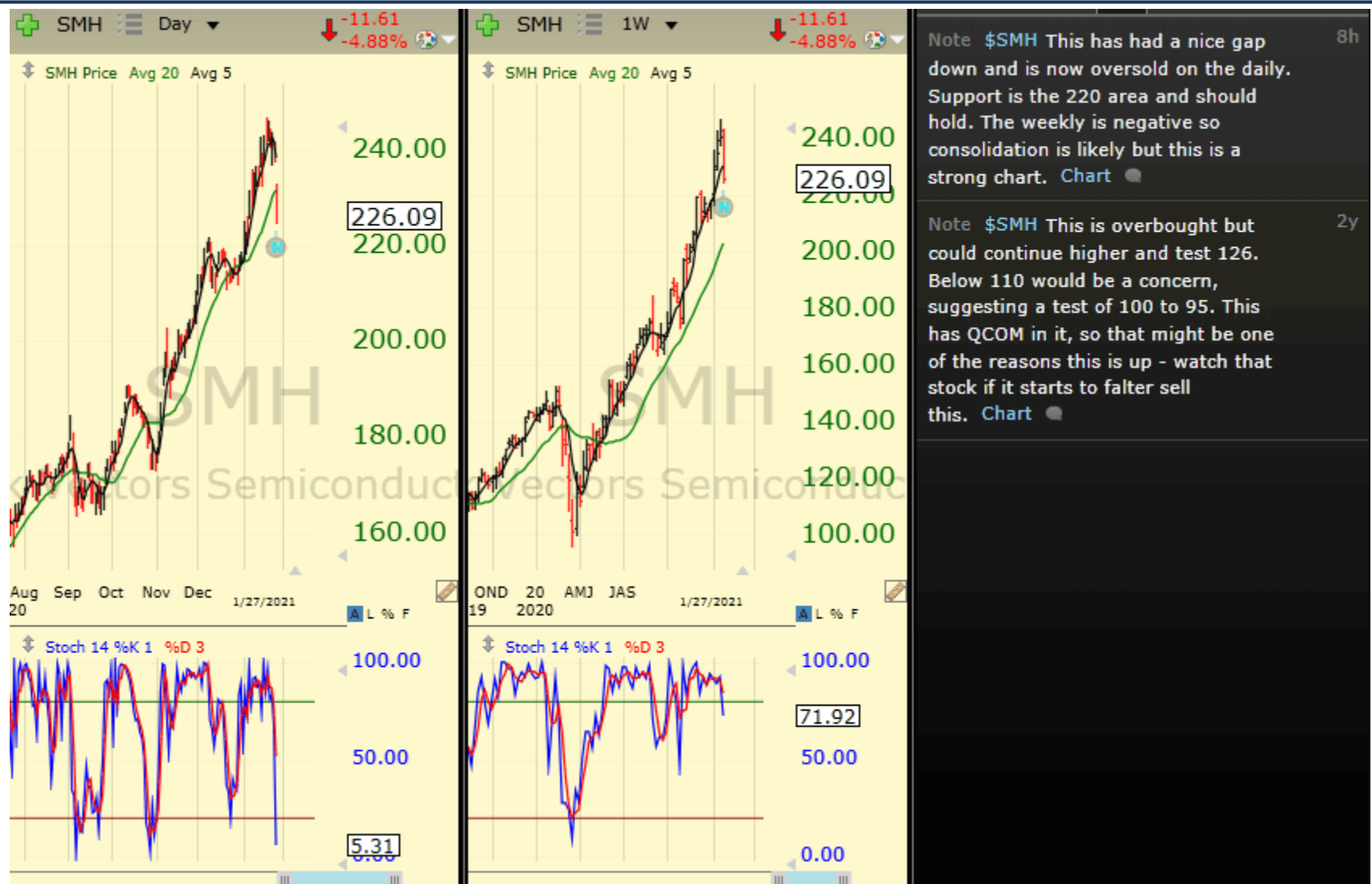
Note \$SEDG The chart on this is strong intermediate-term, and the stochastics are a bit better than many of the chart in this chrtbook. Buy another daily recycle, this has failed so far, and the weekly is coming down enough to hold this in the 250-area. Resistance is 320 to 250. [Chart](#)

10h

# Chartbook: Stocks of Interest



# Chartbook: Stocks of Interest



# Chartbook: Stocks of Interest



# Technical Indicators

---

Readers will note that we use the same indicators on all of the charts in this presentation. We append definitions of these indicators and are available via the website: [Education and Training Center](#).

# Technicals Defined

---

## Moving Averages:

Moving averages are one of the building blocks of Technical Analysis, and there are almost as many ways to use this indicator as there are technicians.

At the FRED report we teach and use a dual moving average crossover system to determine trend. Our favorites are the 5 period and 20 period moving averages. We consider the trend to be up if the 5 is above the 20, and down if below it.

## Stochastics:

The Stochastic Oscillator is one of the commonly used momentum oscillators and is standard on charting programs. There are two lines on the chart below, %K and %D.

%K is the faster of the two lines, and represents a mathematical formula that *measures where the current close is in relation to the trading range of the last "X" periods of time*. We use a 14 period look-back, so in plain English %K says where the current close is in the trading range of the last 14 days, expressed as a %.

At the FRED report we use it somewhat differently than is commonly taught. The standard way to use the indicator is to register a buy signal when it moves below, and then above, 20 (the lowest 20% of closing prices in the last 14 days). A sell signal is when the indicator moves above, and then below 80 (the highest 80% of closes over the last 14 days).

*The other line, %D, is a 3 period moving average of %K. We have found that the Stochastic is sensitive, so we advocate taking signals only in the direction of the trend. When looking at the standard FRED report chart, this would mean taking buy signals when the 5 is above the 20, and sell signals when the 5 is below the 20, but using a different technique to exit positions. The reason for this is the Stochastic is quite sensitive, and can give early indications, especially in new trends. It also can get "stuck" in the direction of trends, which connotes strength and not weakness. Another, preferred interpretation, is to use the indicator to measure risk. An example: buy in an uptrend, not when the stochastic is at 90% but rather wait until it falls below 50%, This way, even if a stock, commodity, or ETF does not give one of the "classic" signals, you can still use the indicator to assess risk, and leg into positions.*

# The FRED Report

Financial Research, Education & Data

---

**The FRED Report** ([www.theFREDreport.com](http://www.theFREDreport.com)) was started to provide Financial Advisors and investors access to unbiased market research. The President of The Fred Report, **Fred Meissner, CMT** has been practicing Technical Market Analysis since 1983 and has worked in the research departments of Merrill Lynch and Robinson – Humphrey /Smith Barney. In addition he has served the public as a portfolio manager and financial advisor. We know the problems investors face and have devoted our career to helping find the best possible investments in all environments.

