

Chartbook Review

(charts as of 08/07/19)

The FRED Report

4514 Chamblee-Dunwoody
Dunwoody, GA 30338

Web:

www.theFREDreport.com

Phone: 404-875-FRED

fred@thefredreport.com

By Fred Meissner, CMT

www.theFREDreport.com

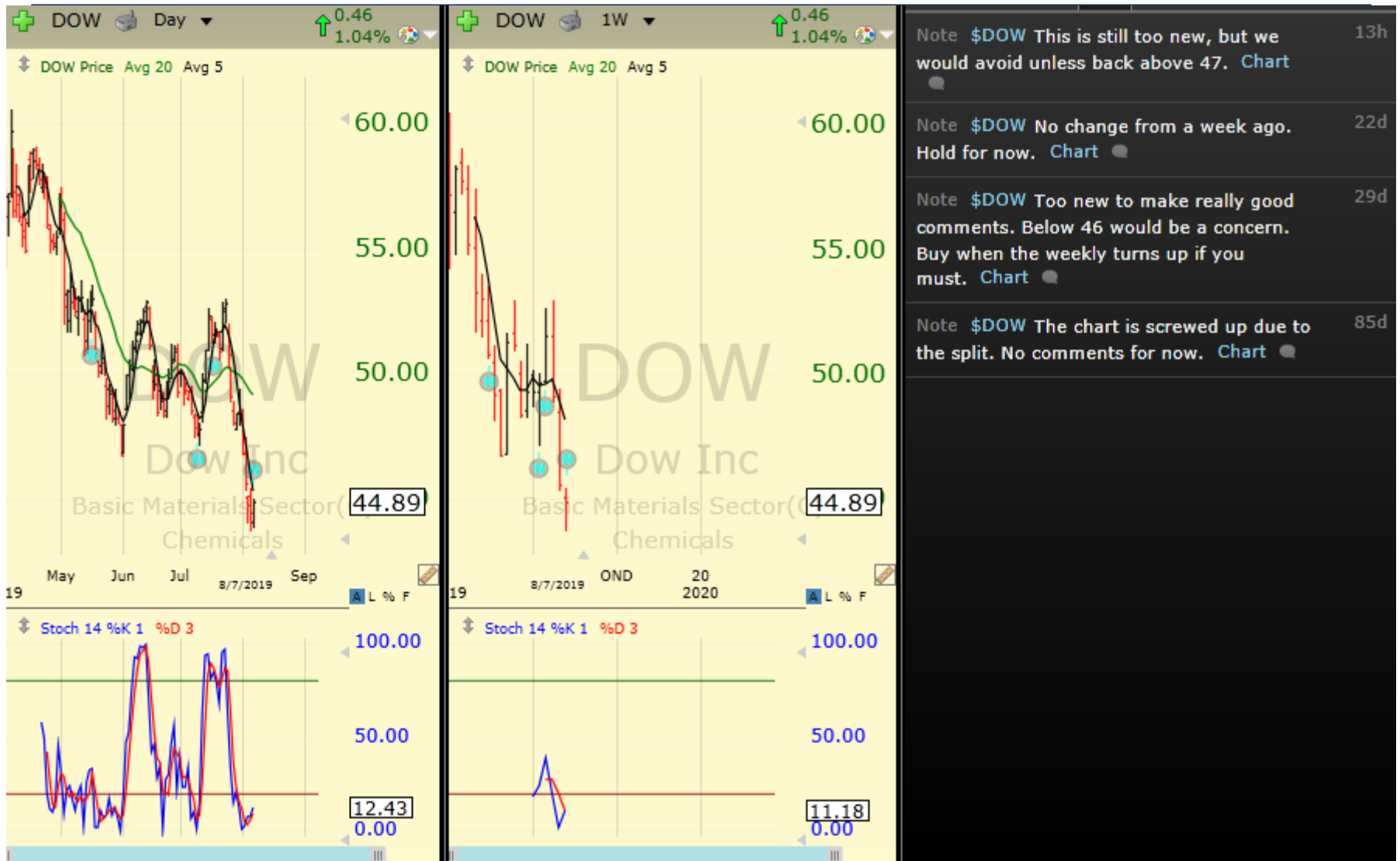
Chartbook: Stocks of Interest

Sym	Company	trkPrice	Sector ▲	Industry
DOW	Dow Inc	44.86	Basic Materials Sector	Chemicals
MERC	Mercer Internat Inc Sbi	11.65	Basic Materials Sector	Paper & Paper Products
LIN	Linde AG	190.48	Basic Materials Sector	Specialty Chemicals
SHW	Sherwin-Williams Co	512.99	Basic Materials Sector	Specialty Chemicals
UAA	Under Armour Inc	20.90	Consumer Cyclical Sector	Apparel Manufacturing
ADNT	Adient Plc	24.27	Consumer Cyclical Sector	Auto Parts
NCLH	Norwegian Cruise Line Holdings	47.60	Consumer Cyclical Sector	Leisure
DIS	The Walt Disney Company	134.74	Consumer Cyclical Sector	Media - Diversified
VIAB	Viacom Inc Class B	29.60	Consumer Cyclical Sector	Media - Diversified
QSR	Restaurant Brands International I	78.08	Consumer Cyclical Sector	Restaurants
SBUX	Starbucks Corporation	95.17	Consumer Cyclical Sector	Restaurants
SHAK	Shake Shack Inc	85.24	Consumer Cyclical Sector	Restaurants
ETSY	Etsy Inc	56.23	Consumer Cyclical Sector	Specialty Retail
KO	Coca-Cola Co	53.18	Consumer Defensive Sector	Beverages - Soft Drinks
COST	Costco Wholesale Corp	273.95	Consumer Defensive Sector	Discount Stores
PFGC	Performance Food Group Compan	43.40	Consumer Defensive Sector	Food Distribution
KR	The Kroger Company	23.90	Consumer Defensive Sector	Grocery Stores
FANG	Diamondback Energy, Inc.	93.13	Energy Sector	Oil & Gas E&P
CG	The Carlyle Group L.P.	23.39	Financial Services Sector	Asset Management
MS	Morgan Stanley	40.54	Financial Services Sector	Capital Markets
SCHW	Charles Schwab Corp	37.54	Financial Services Sector	Capital Markets
V	Visa Inc	175.11	Financial Services Sector	Credit Services
MKL	Markel Corp	1115.74	Financial Services Sector	Insurance - Property & Casualty
BLUE	Bluebird Bio Inc	120.64	Healthcare Sector	Biotechnology
CRBP	Corbus Pharmaceuticals Holdings	5.68	Healthcare Sector	Biotechnology
SRPT	Sarepta Therapeutics Inc	141.67	Healthcare Sector	Biotechnology
GH	Guardant Health Inc	109.50	Healthcare Sector	Diagnostics & Research
IQV	IQVIA Holdings Inc	155.14	Healthcare Sector	Diagnostics & Research

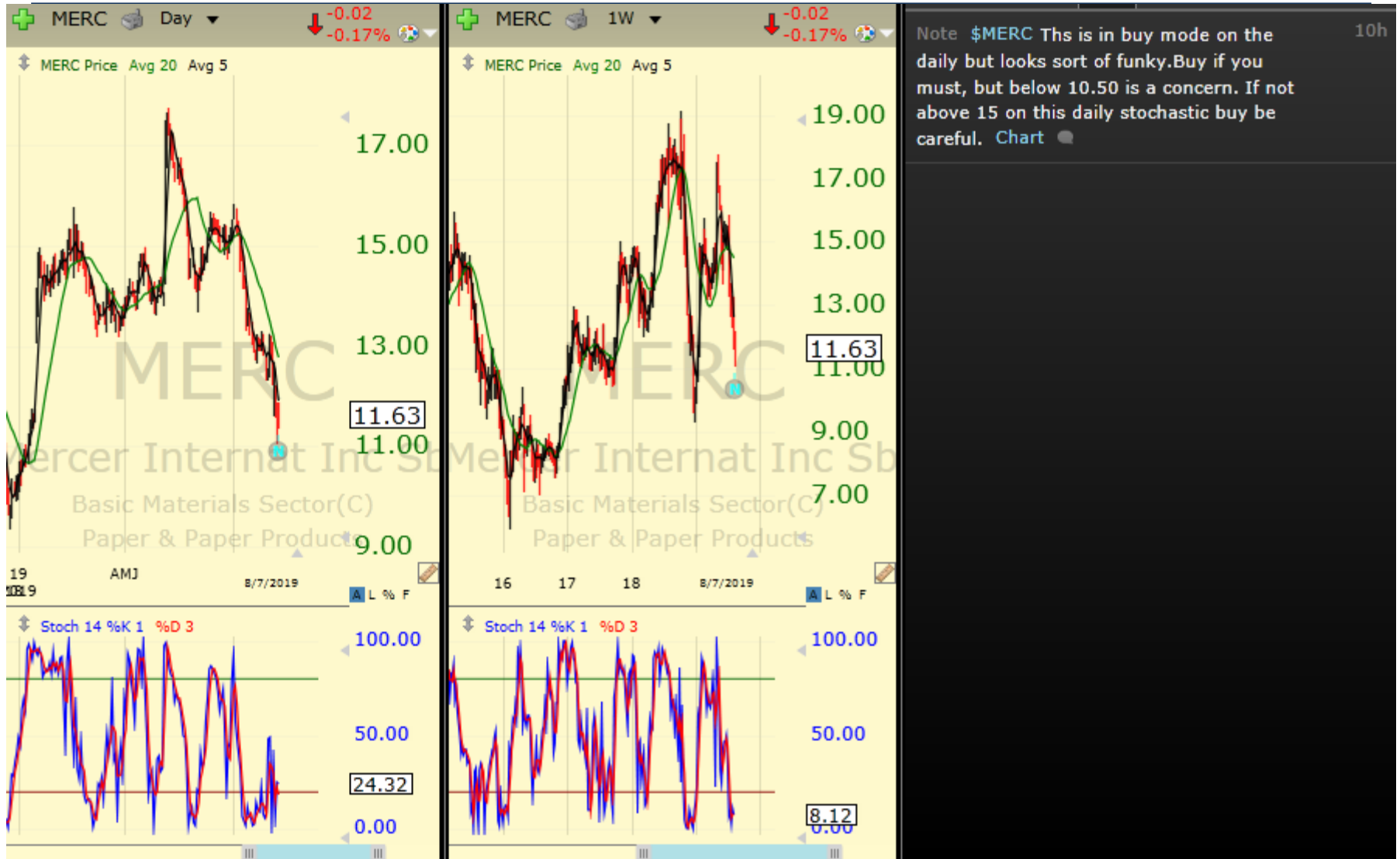
Chartbook: Stocks of Interest

Sym	Company	trkPrice	Sector	Industry
GWPH	GW Pharmaceuticals Plc	164.78	Healthcare Sector	Drug Manufacturers - Major
CGC	Canopy Growth Corporation	32.03	Healthcare Sector	Drug Manufacturers - Specialty & Generic
ZTS	Zoetis Inc.	120.75	Healthcare Sector	Drug Manufacturers - Specialty & Generic
CVS	CVS Health Corporation	57.95	Healthcare Sector	Health Care Plans
HNGR	Hanger Inc	15.61	Healthcare Sector	Medical Care
SYK	Stryker Corp	211.23	Healthcare Sector	Medical Devices
ISRG	Intuitive Surgical Inc	505.30	Healthcare Sector	Medical Instruments & Supplies
XRAY	Dentsply Sirona Inc	51.42	Healthcare Sector	Medical Instruments & Supplies
SPR	Spirit Aerosystems Holdings	74.02	Industrials Sector	Aerospace & Defense
GNRC	Generac Holdings Inc	72.44	Industrials Sector	Diversified Industrials
GTLS	Chart Industries Inc	62.82	Industrials Sector	Metal Fabrication
URI	United Rentals Inc	113.00	Industrials Sector	Rental & Leasing Services
BRC	Brady Corporation Cl A	49.93	Industrials Sector	Security & Protection Services
SWK	Stanley Black & Decker Inc	136.84	Industrials Sector	Tools & Accessories
WM	Waste Management Inc	116.82	Industrials Sector	Waste Management
CBRE	CBRE Group, Inc.	51.66	Real Estate Sector	Real Estate Services
GLPI	Gaming and Leisure Properties Inc	37.72	Real Estate Sector	REIT - Diversified
CSCO	Cisco Systems Inc	52.29	Technology Sector	Communication Equipment
GLW	Corning Inc	28.51	Technology Sector	Electronic Components
IT	Gartner Inc	129.43	Technology Sector	Information Technology Services
QCOM	Qualcomm Inc	69.35	Technology Sector	Semiconductors
TXN	Texas Instruments Inc	120.72	Technology Sector	Semiconductors
XLNX	Xilinx Inc	104.92	Technology Sector	Semiconductors
CRM	Salesforce.com Inc	141.11	Technology Sector	Software - Application
NOW	ServiceNow, Inc	260.51	Technology Sector	Software - Application
PEGI	Pattern Energy Group, Inc.	22.63	Utilities Sector	Utilities - Independent Power Producers
XSLV	Invesco S&P 600 Low Volatility	47.47		

Chartbook: Stocks of Interest



Chartbook: Stocks of Interest



Chartbook: Stocks of Interest



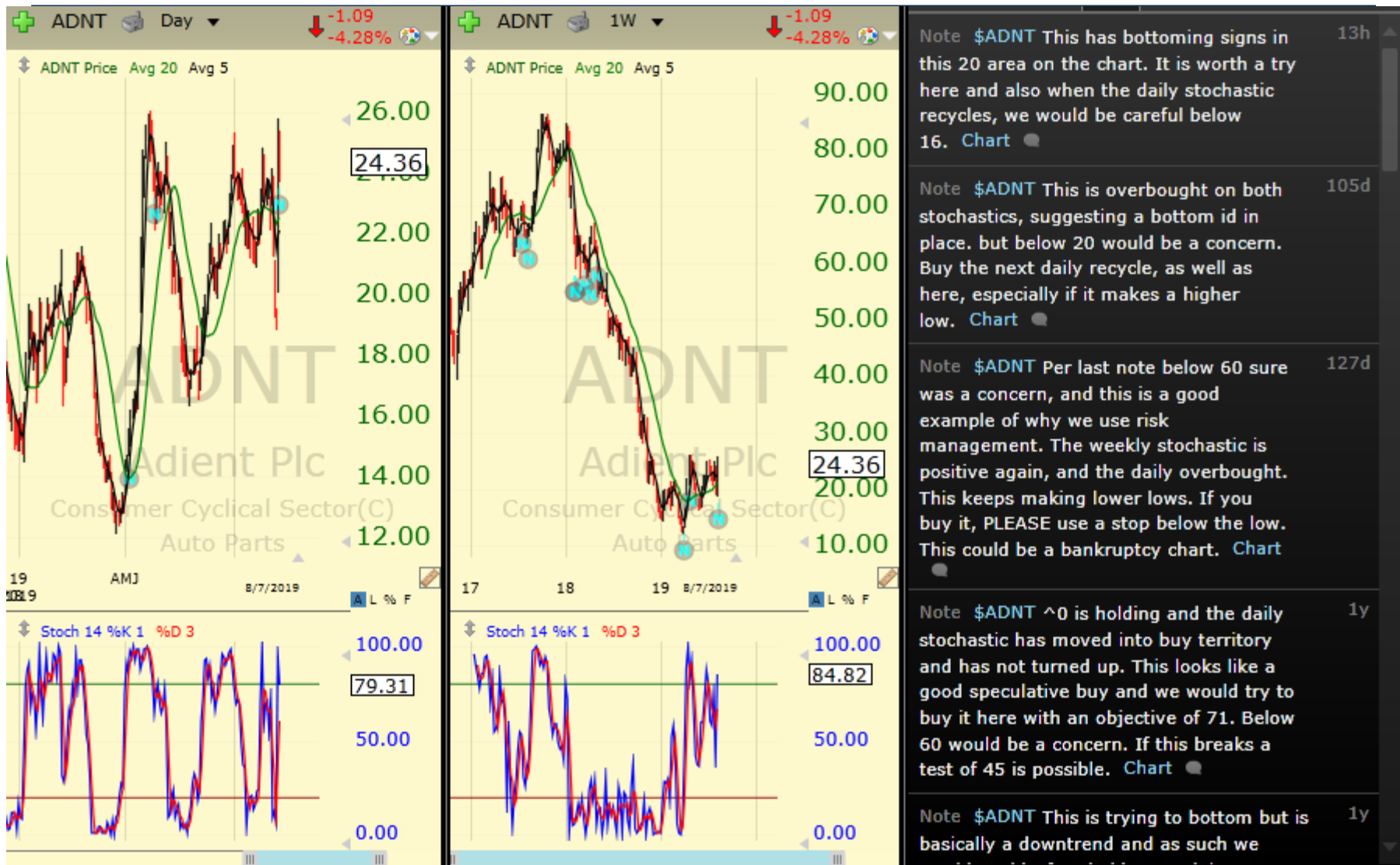
Chartbook: Stocks of Interest



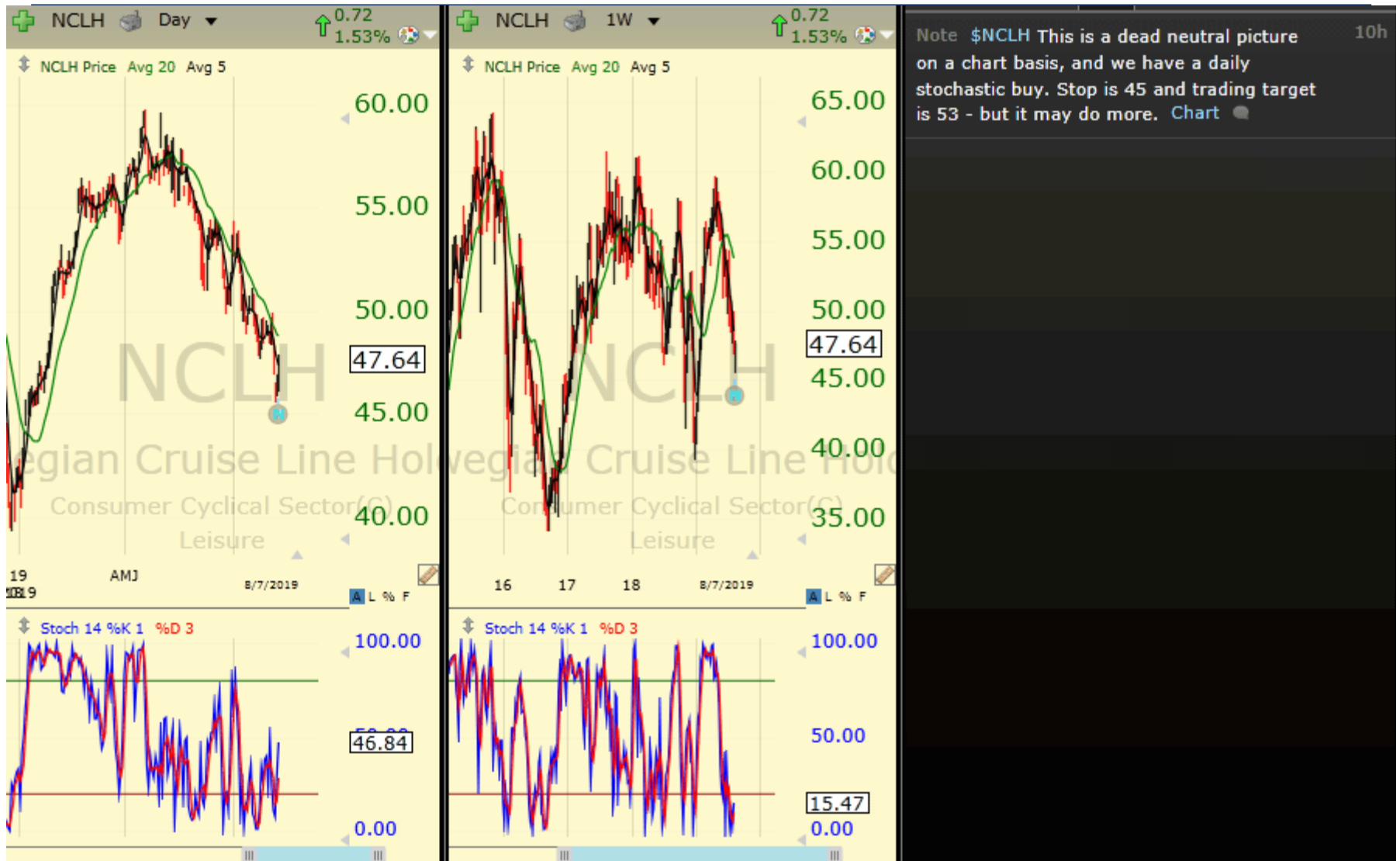
Chartbook: Stocks of Interest



Chartbook: Stocks of Interest



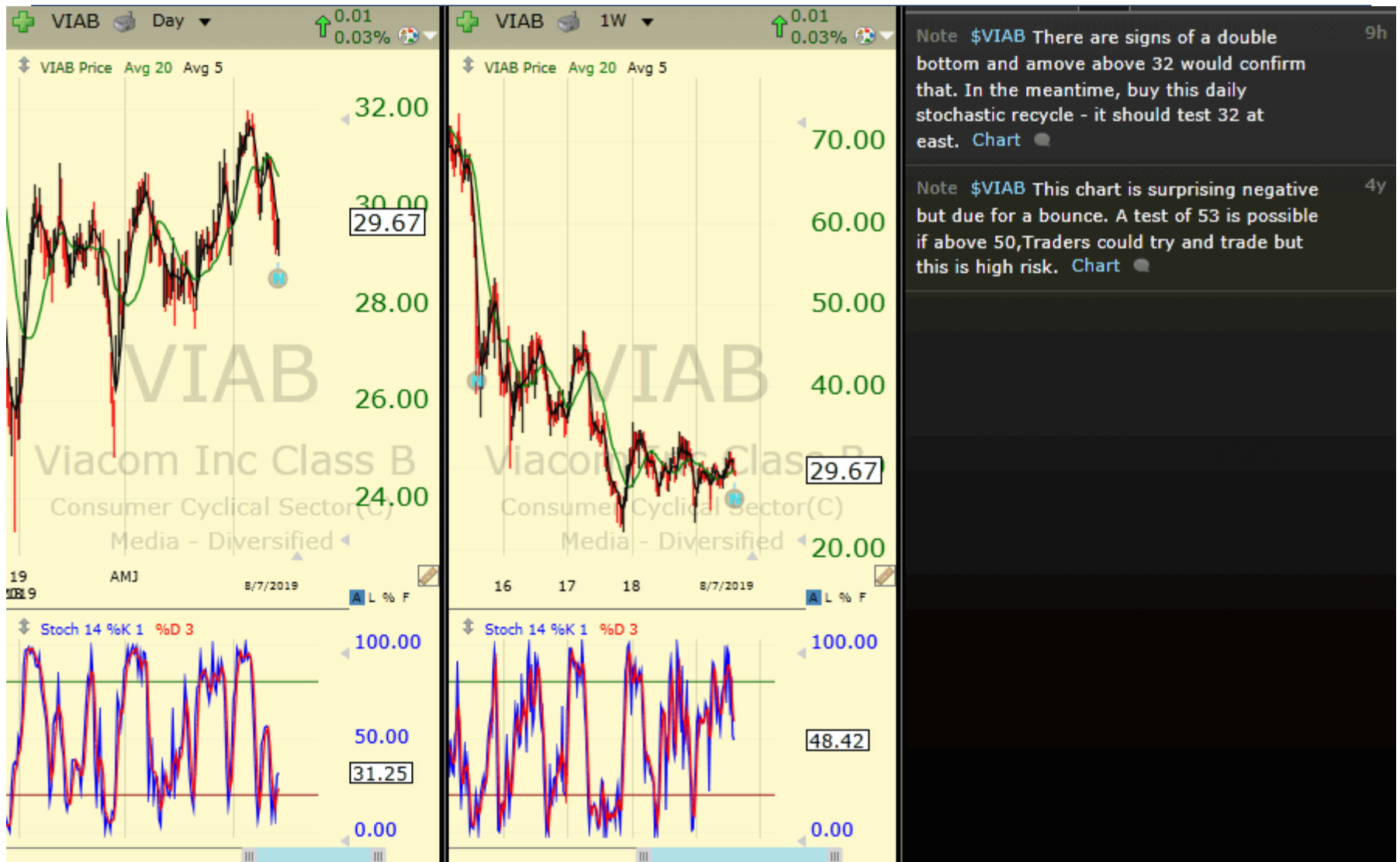
Chartbook: Stocks of Interest



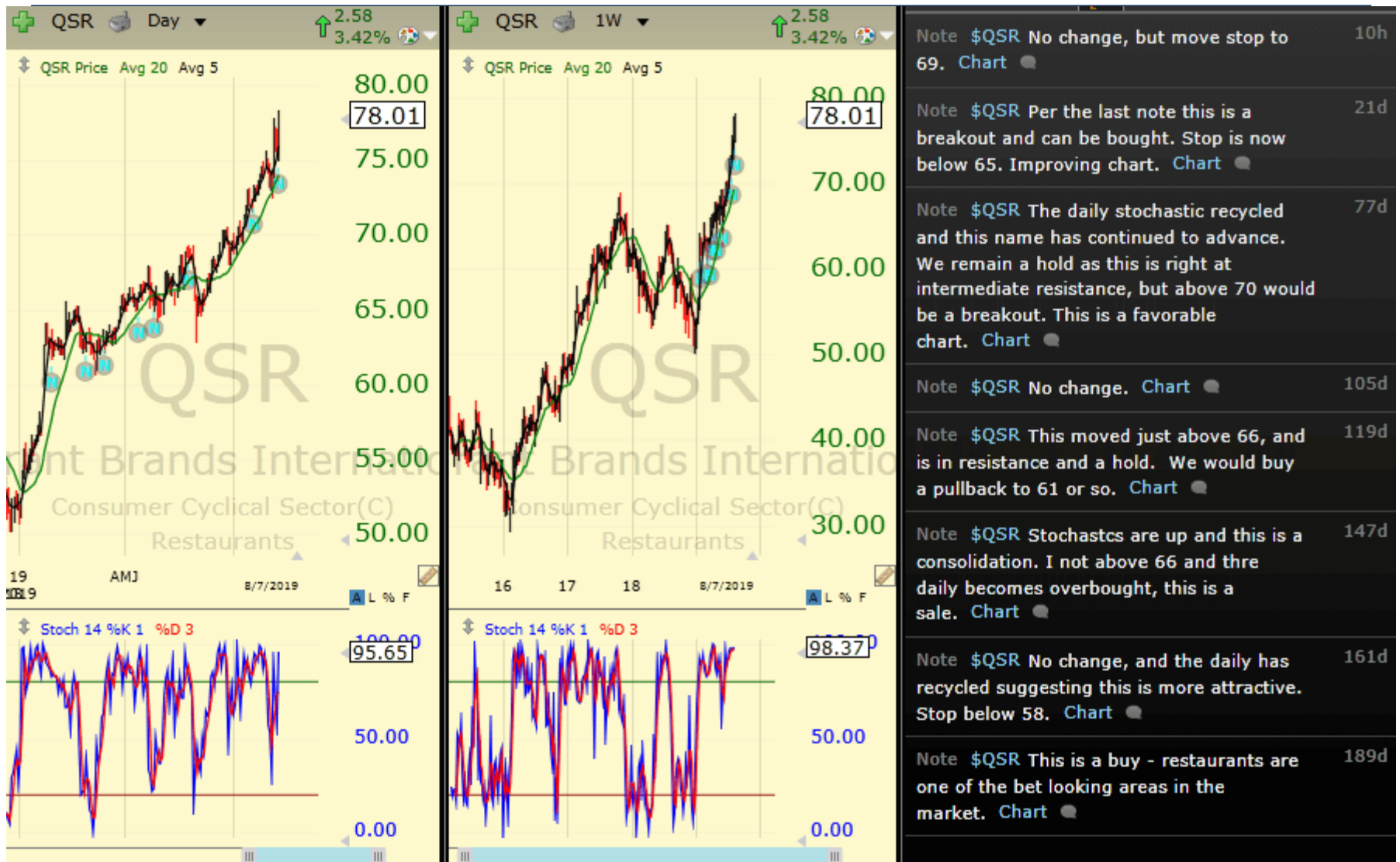
Chartbook: Stocks of Interest



Chartbook: Stocks of Interest



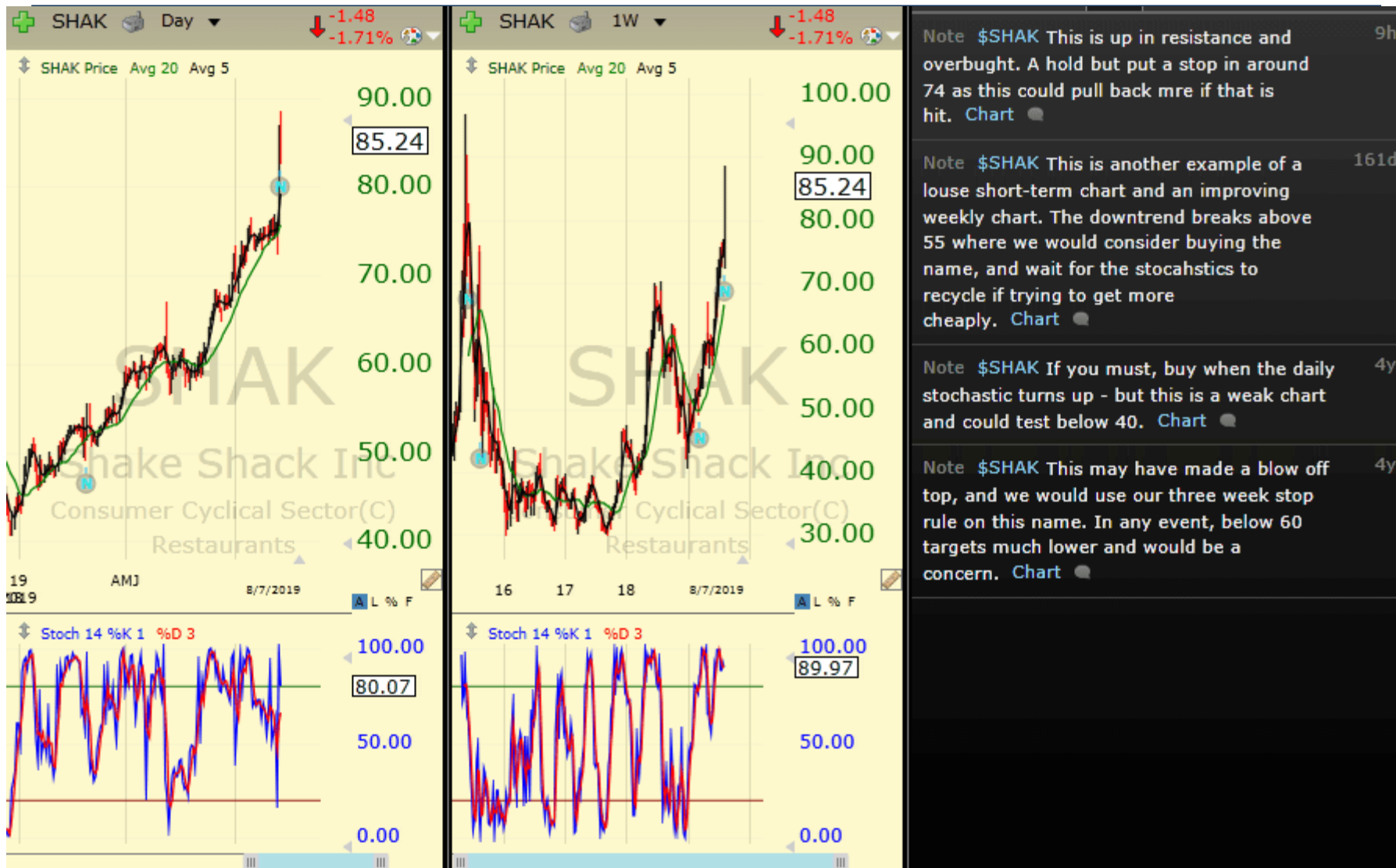
Chartbook: Stocks of Interest



Chartbook: Stocks of Interest



Chartbook: Stocks of Interest



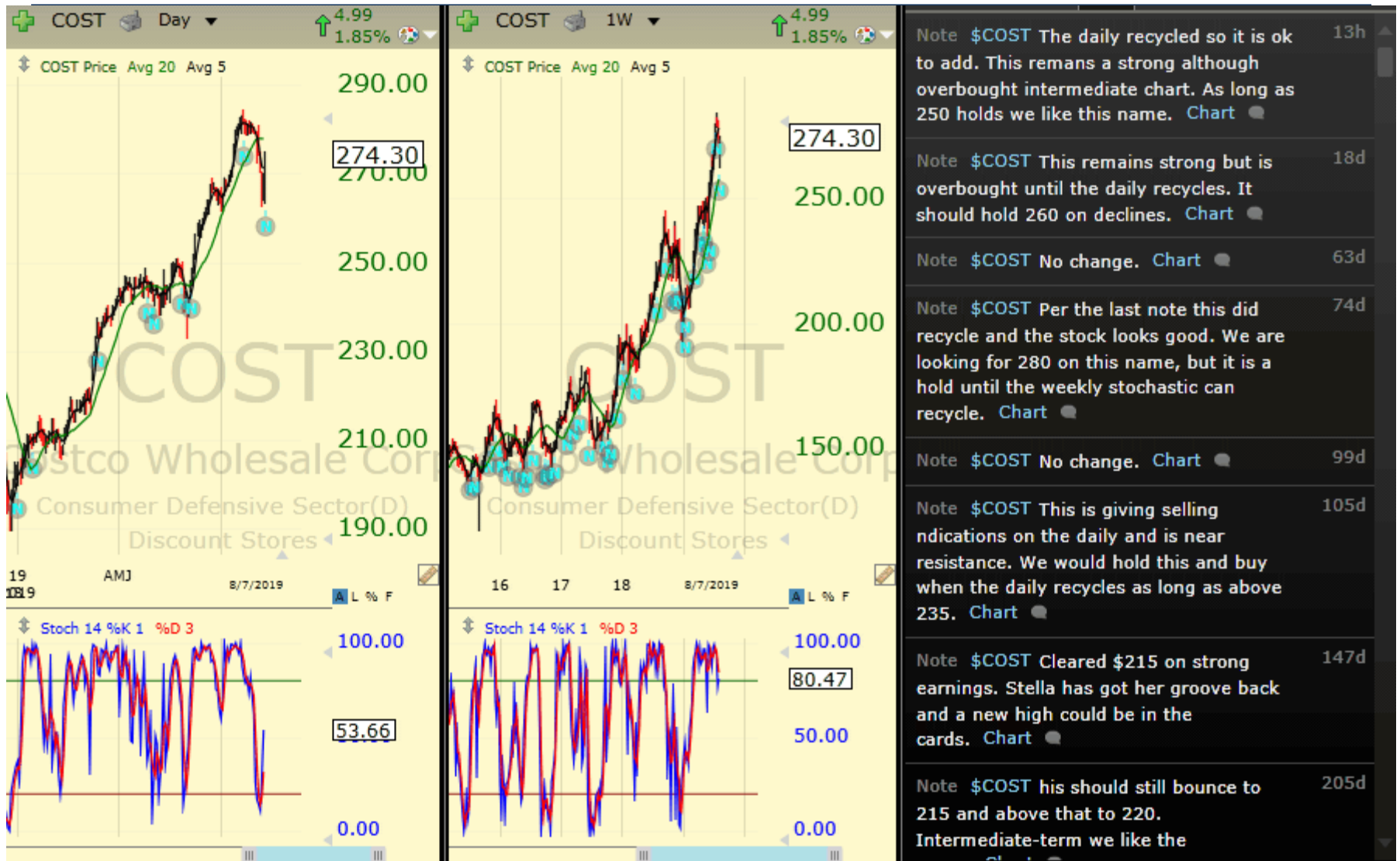
Chartbook: Stocks of Interest



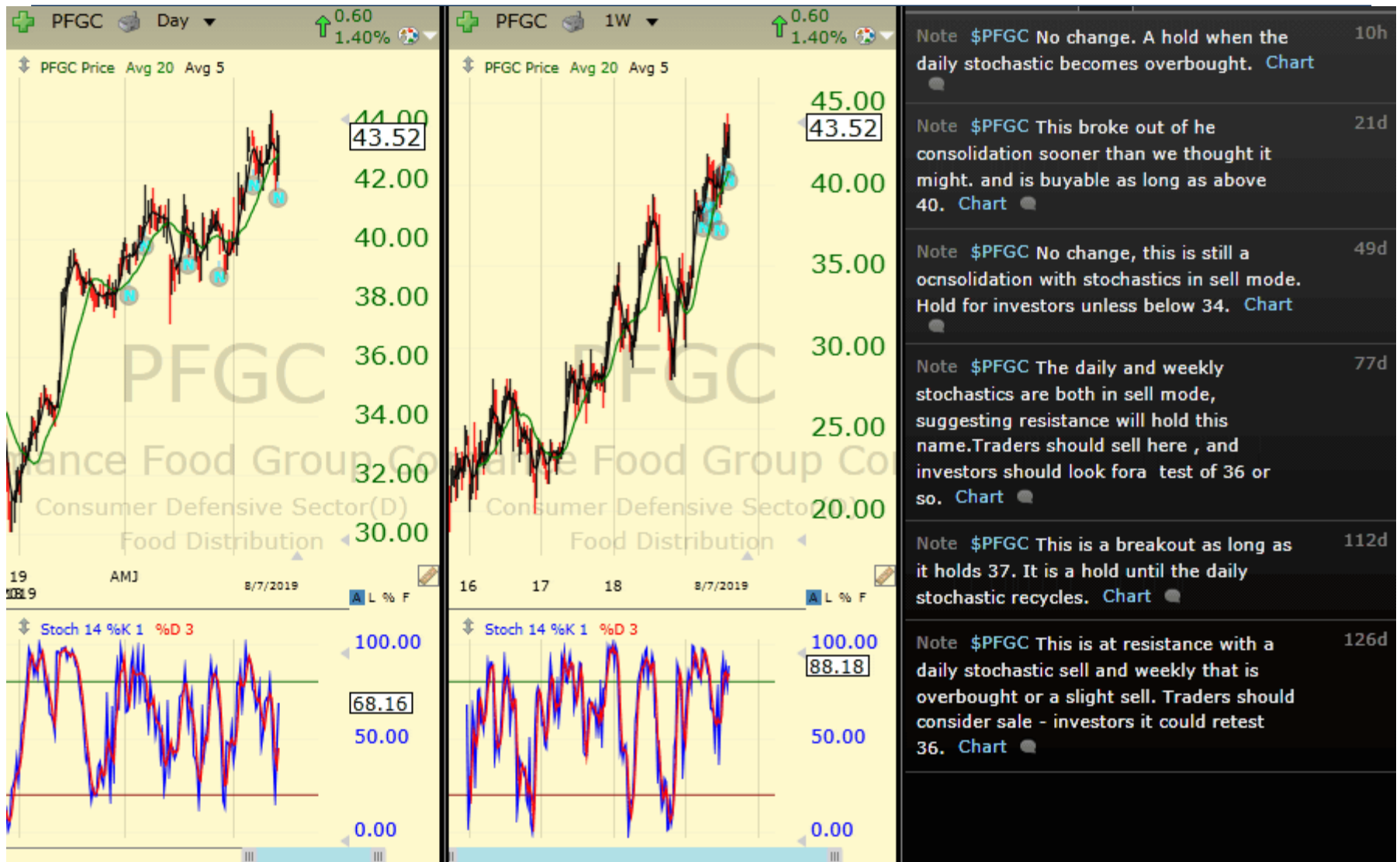
Chartbook: Stocks of Interest



Chartbook: Stocks of Interest



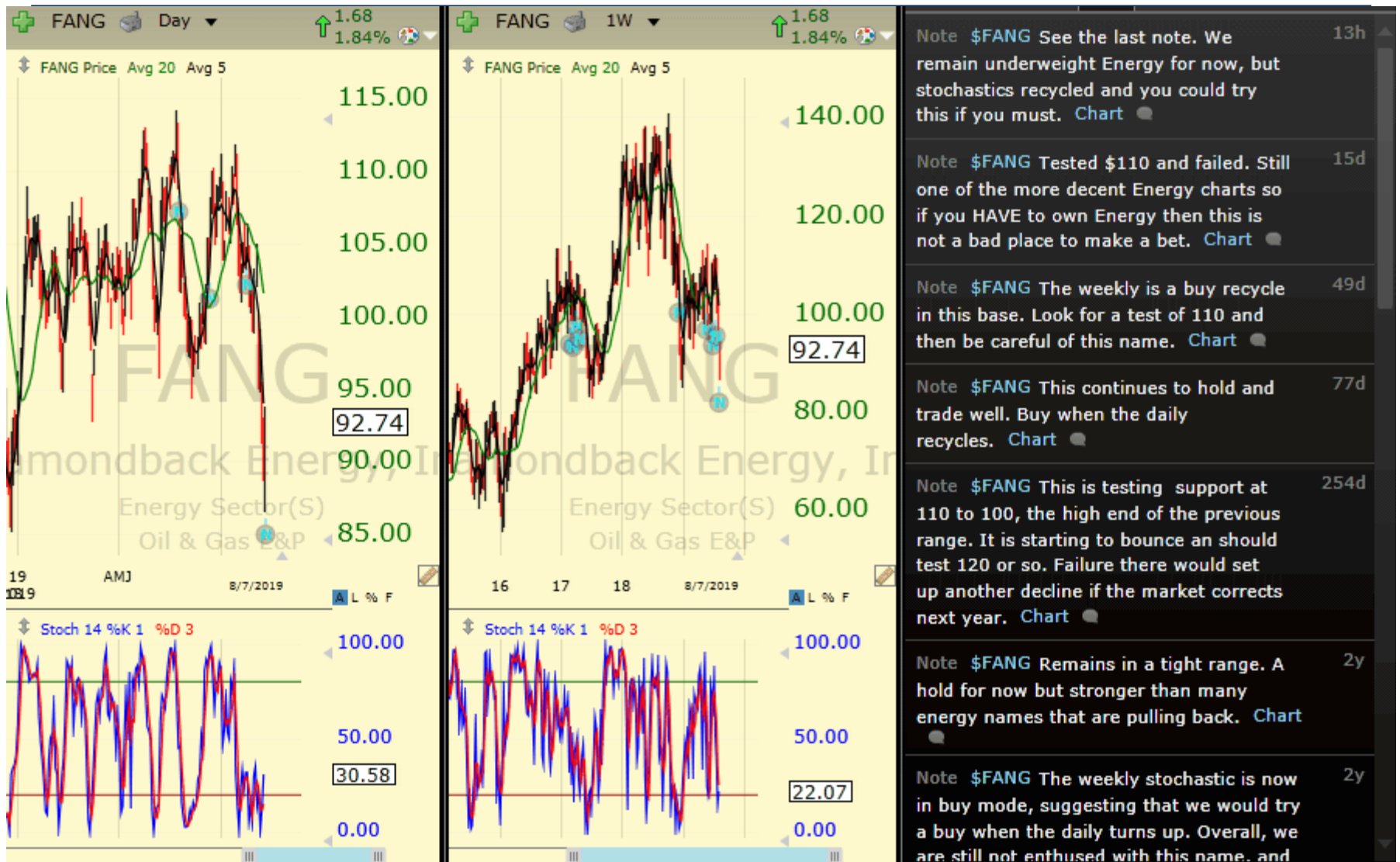
Chartbook: Stocks of Interest



Chartbook: Stocks of Interest



Chartbook: Stocks of Interest



Chartbook: Stocks of Interest



Chartbook: Stocks of Interest



Chartbook: Stocks of Interest



Chartbook: Stocks of Interest



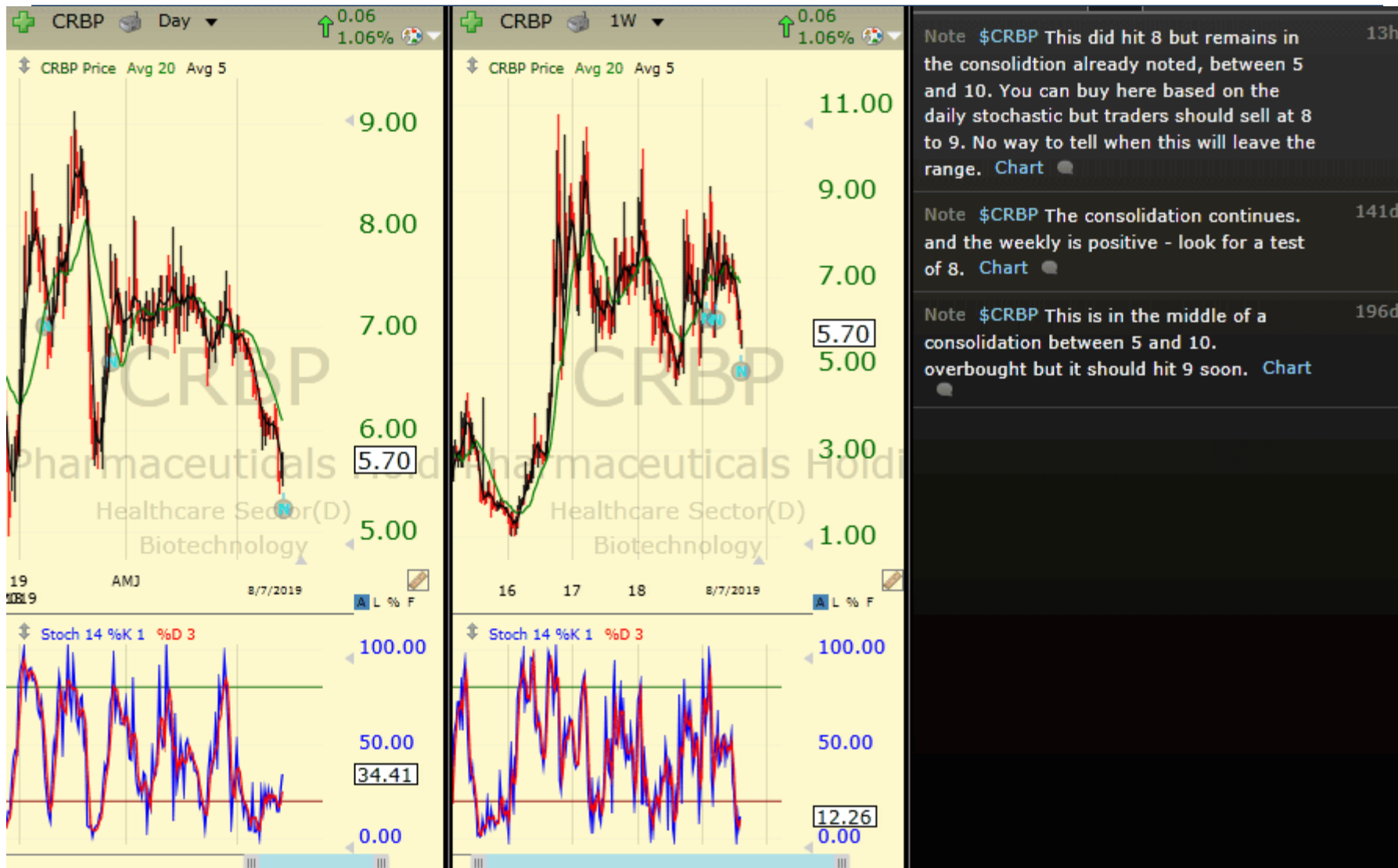
Chartbook: Stocks of Interest



Chartbook: Stocks of Interest



Chartbook: Stocks of Interest



Chartbook: Stocks of Interest



Chartbook: Stocks of Interest



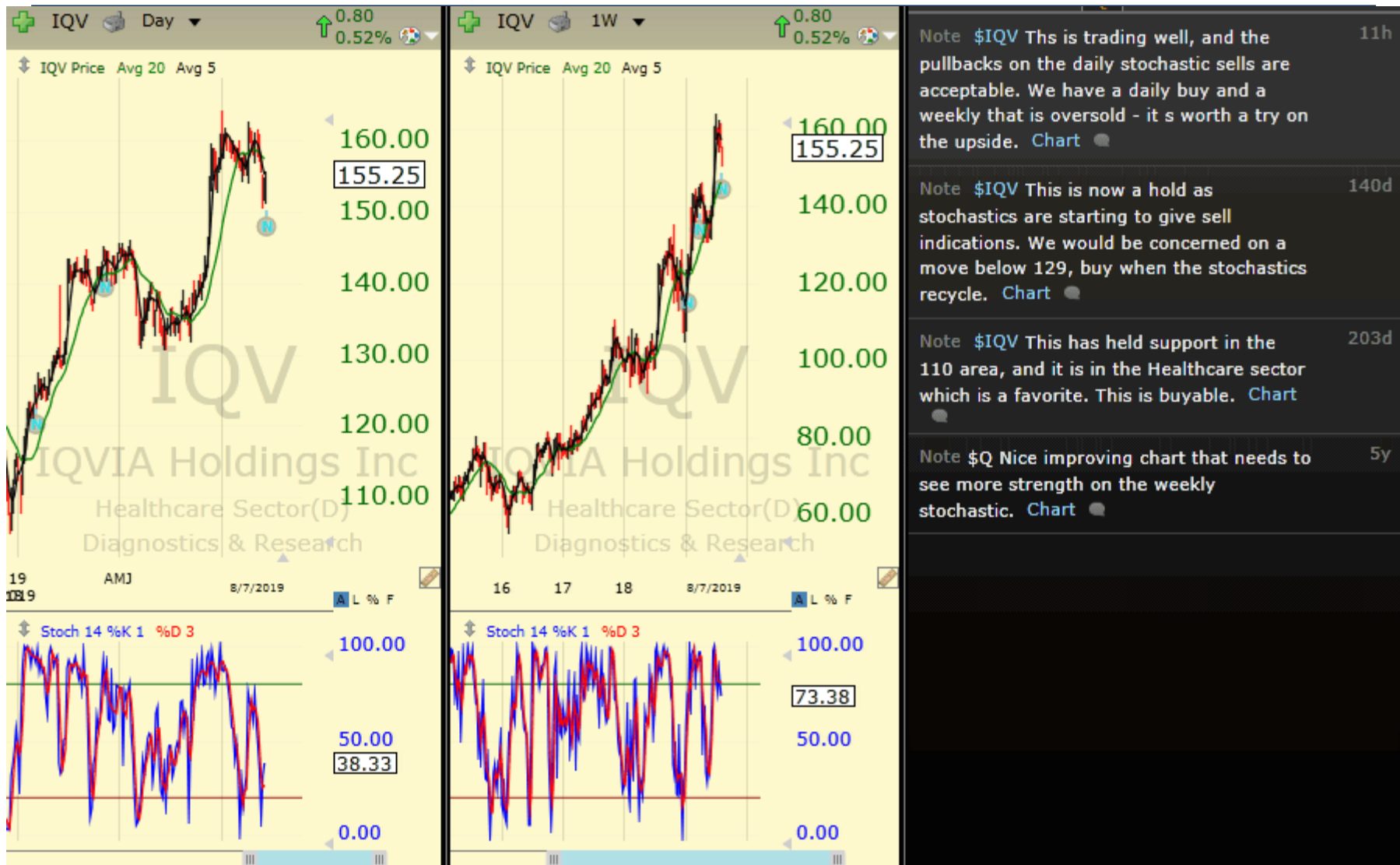
Note \$GH This name has continued up and looks pretty interesting, there must be some fundamental news we don't know. Stop is below 80 and the stock reacted well to a daily recycle, it is buyable on this breakout. [Chart](#) 13h

Note \$GH No change, below 80 would be a concern. [Chart](#) 43d

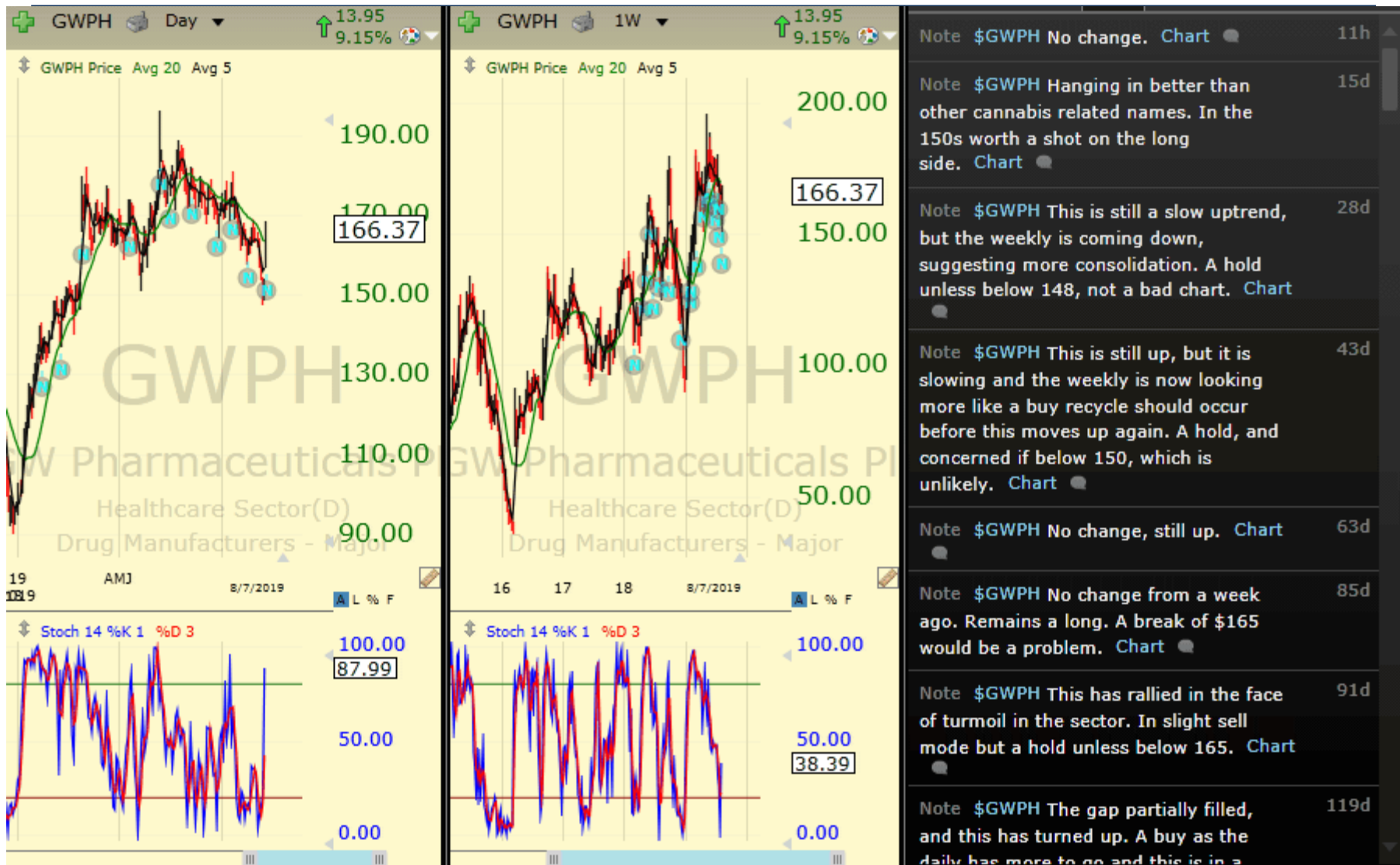
Note \$GH This held 59 and is turning up - bit it is in resistance and the daily stochastic is in sell mode. We are not big on this name, and think it can consolidate here but as long as 60 holds it is ok. 80 is short-term support. Too new to really evaluate. [Chart](#) 56d

Note \$GH Very new so we are not super confident - if you buy use a stop at 59. We would find another name, purely technical basis. [Chart](#) 127d

Chartbook: Stocks of Interest



Chartbook: Stocks of Interest



Chartbook: Stocks of Interest



Chartbook: Stocks of Interest



Chartbook: Stocks of Interest



Chartbook: Stocks of Interest



Chartbook: Stocks of Interest



Chartbook: Stocks of Interest



Chartbook: Stocks of Interest



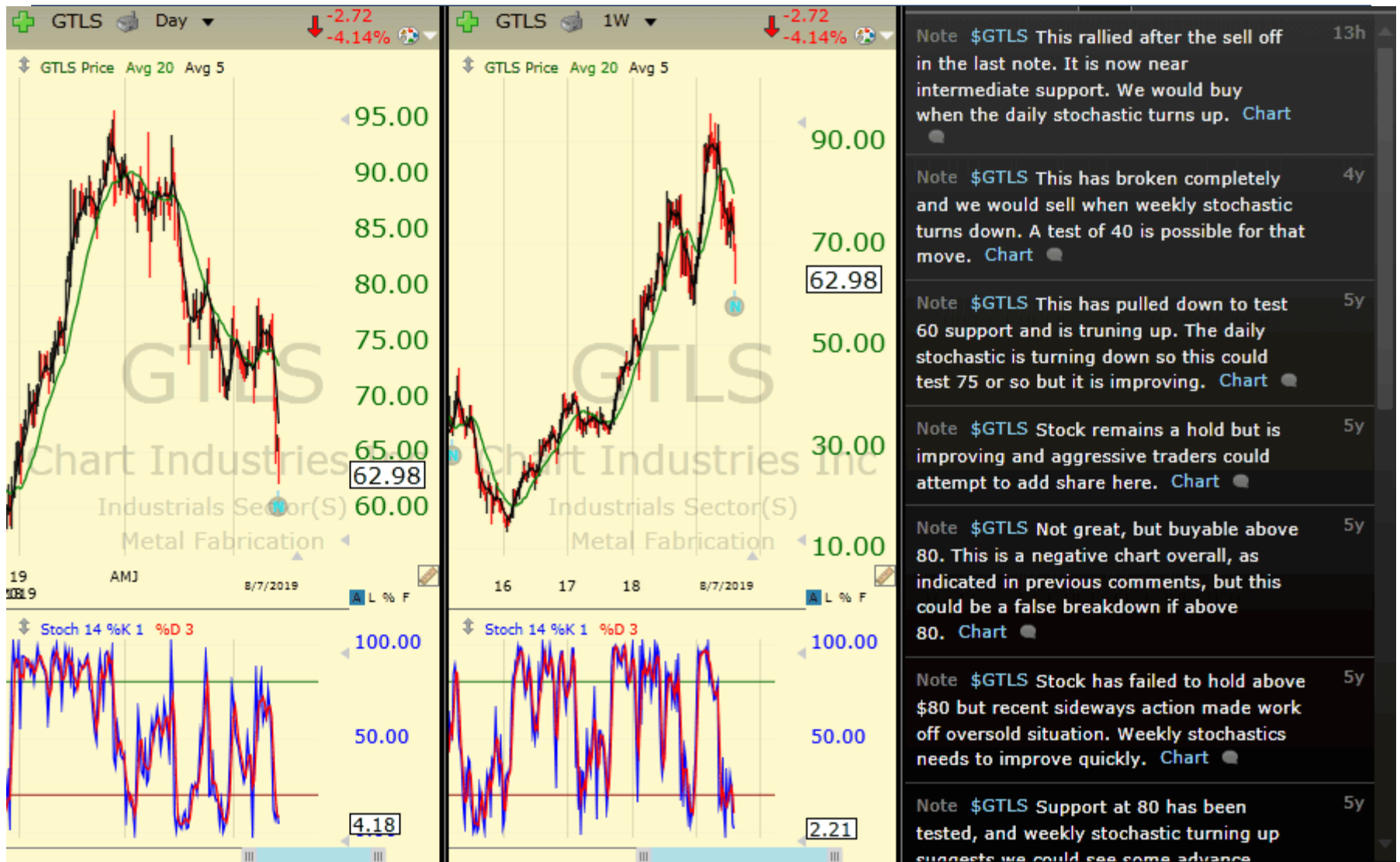
Chartbook: Stocks of Interest



Chartbook: Stocks of Interest



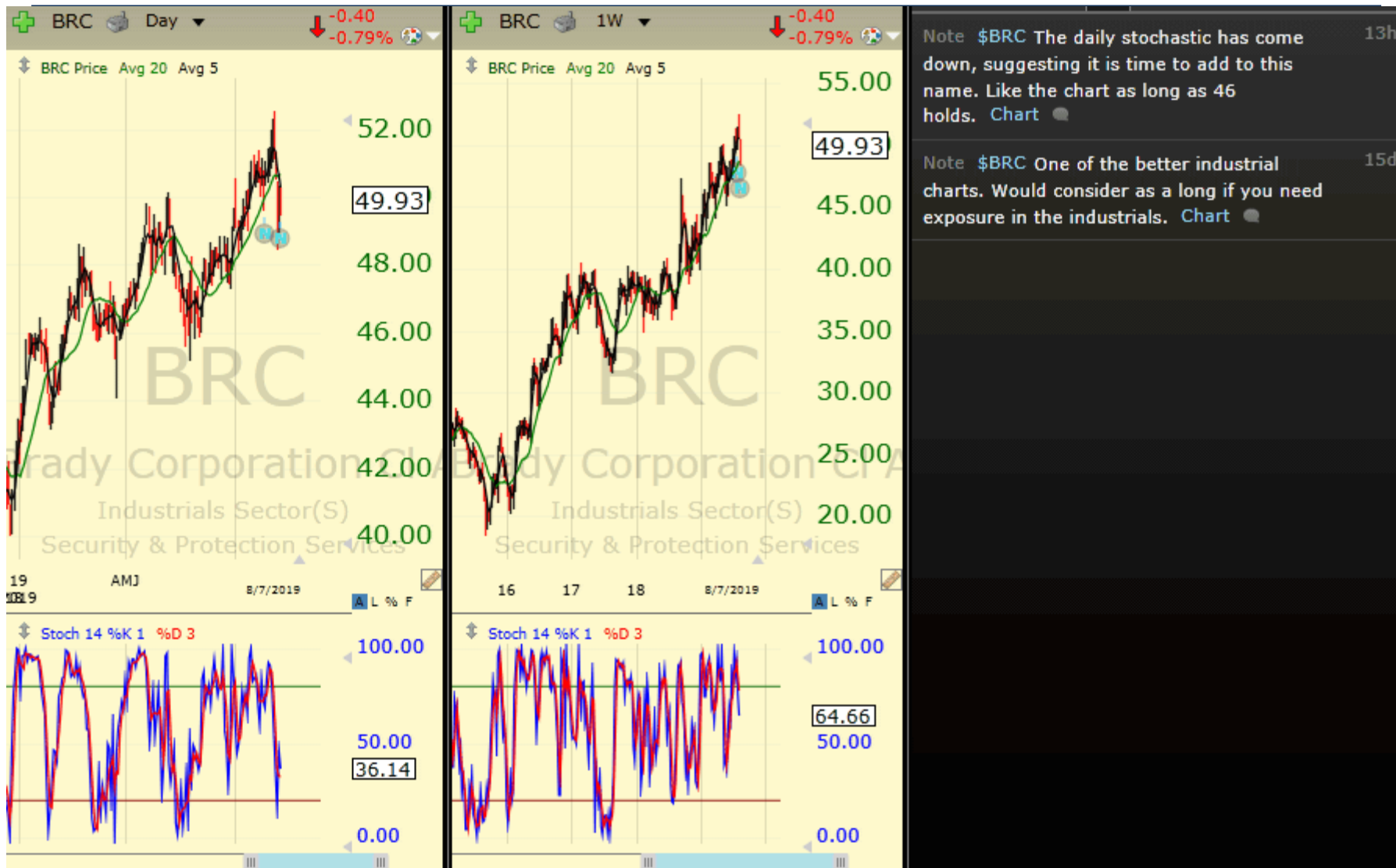
Chartbook: Stocks of Interest



Chartbook: Stocks of Interest



Chartbook: Stocks of Interest



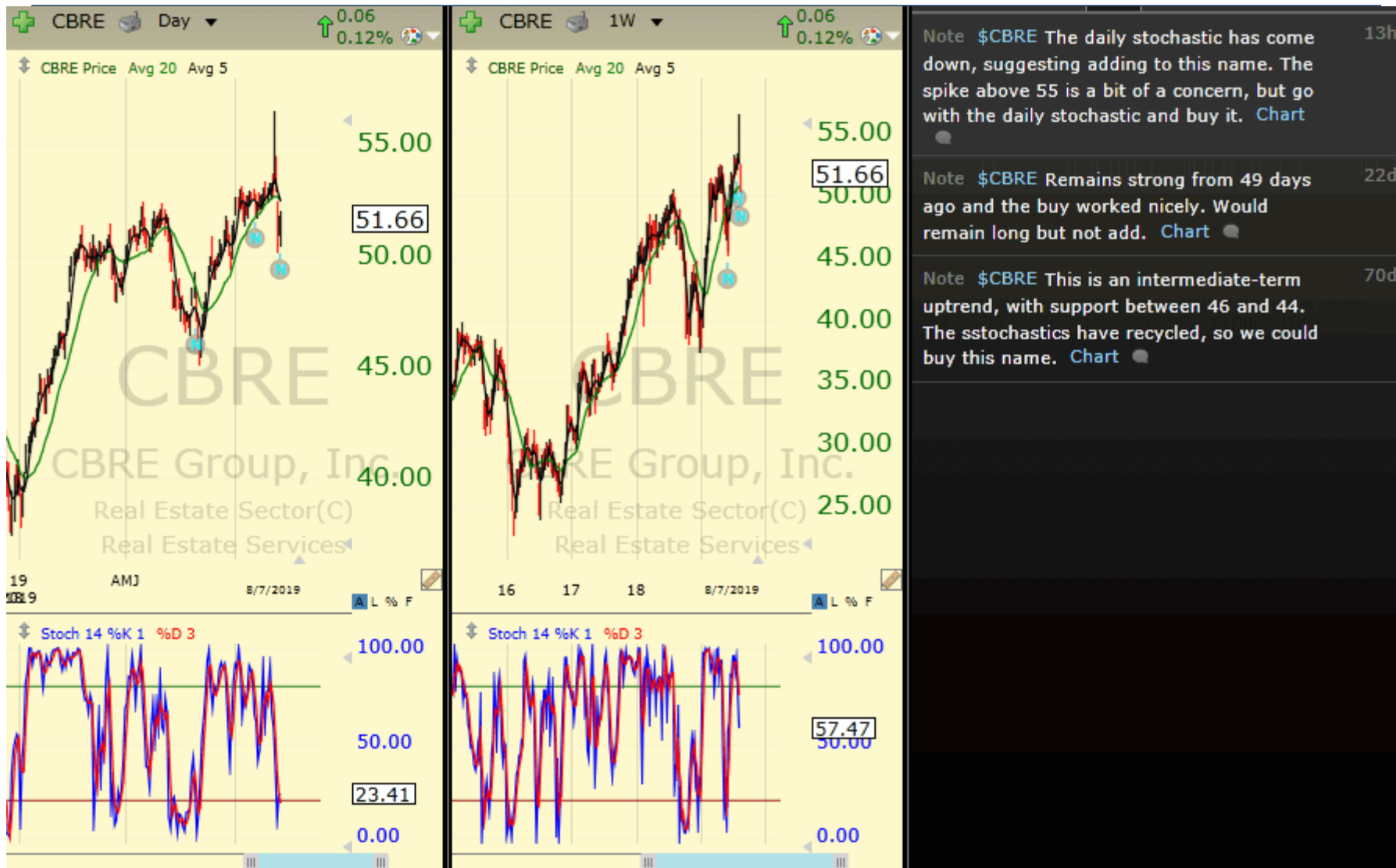
Chartbook: Stocks of Interest



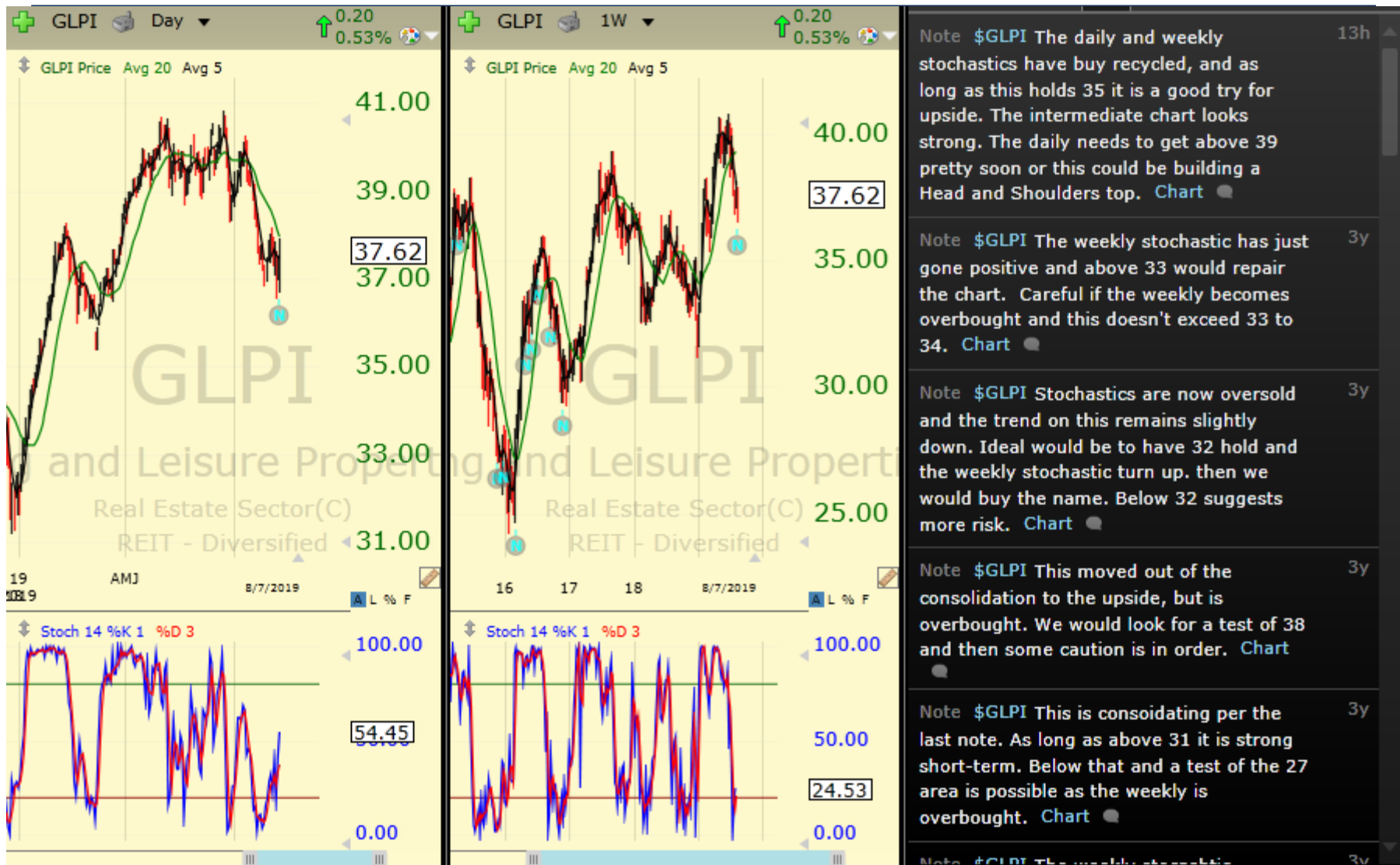
Chartbook: Stocks of Interest



Chartbook: Stocks of Interest



Chartbook: Stocks of Interest



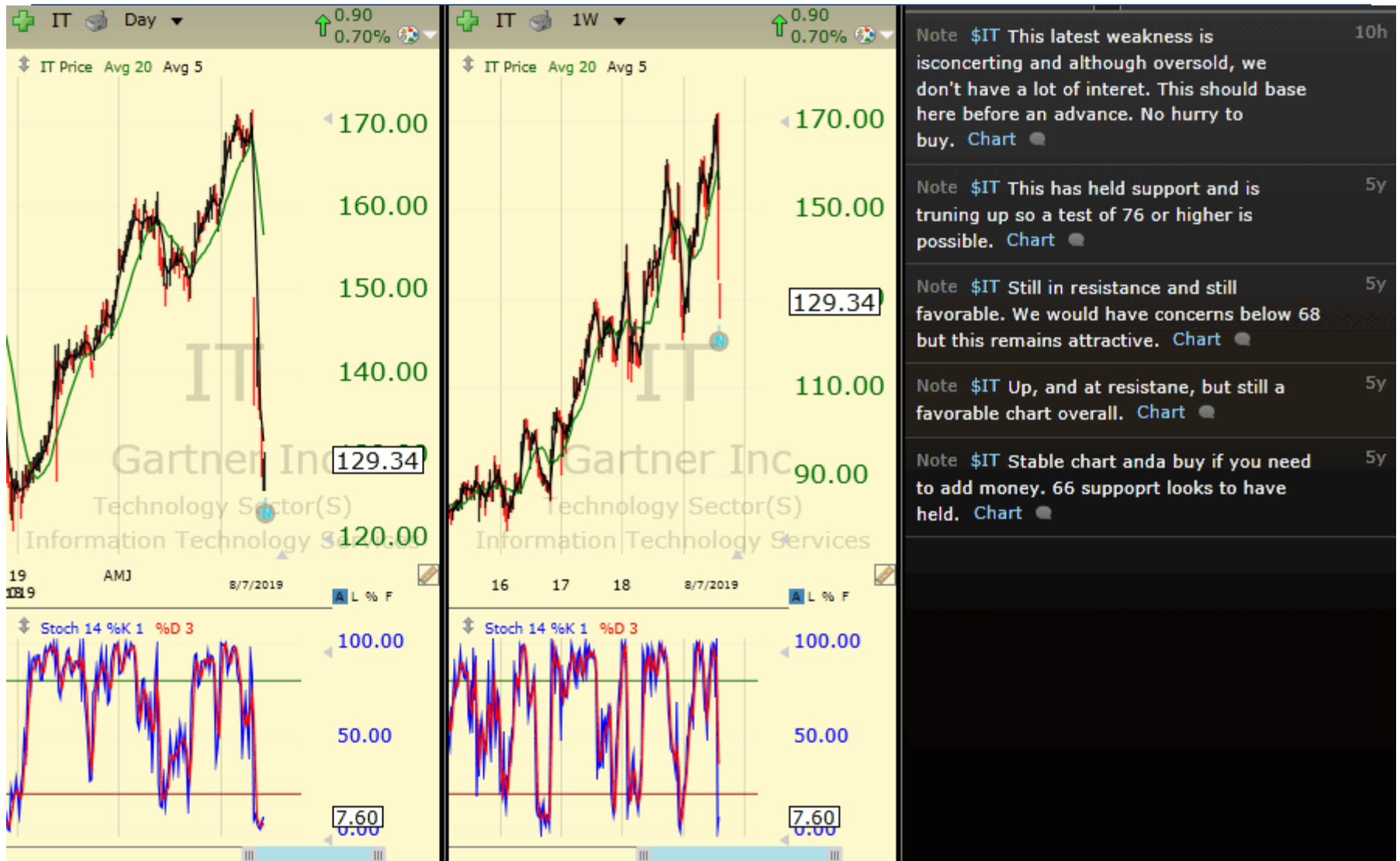
Chartbook: Stocks of Interest



Chartbook: Stocks of Interest



Chartbook: Stocks of Interest



- Note \$IT This latest weakness is isconcering and although oversold, we don't have a lot of interet. This should base here before an advance. No hurry to buy. Chart ● 10h
- Note \$IT This has held support and is truning up so a test of 76 or higher is possible. Chart ● 5y
- Note \$IT Still in resistance and still favorable. We would have concerns below 68 but this remains attractive. Chart ● 5y
- Note \$IT Up, and at resistane, but still a favorable chart overall. Chart ● 5y
- Note \$IT Stable chart anda buy if you need to add money. 66 supportt looks to have held. Chart ● 5y

Chartbook: Stocks of Interest



Chartbook: Stocks of Interest



Chartbook: Stocks of Interest



Chartbook: Stocks of Interest



Chartbook: Stocks of Interest



Chartbook: Stocks of Interest



Chartbook: Stocks of Interest



Technical Indicators

Readers will note that we use the same indicators on all of the charts in this presentation. We append definitions of these indicators and are available via the website: [Education and Training Center](#).

Technical Defined

Moving Averages:

Moving averages are one of the building blocks of Technical Analysis, and there are almost as many ways to use this indicator as there are technicians.

At the FRED report we teach and use a dual moving average crossover system to determine trend. Our favorites are the 5 period and 20 period moving averages. We consider the trend to be up if the 5 is above the 20, and down if below it.

Stochastics:

The Stochastic Oscillator is one of the commonly used momentum oscillators and is standard on charting programs. There are two lines on the chart below, %K and %D.

%K is the faster of the two lines, and represents a mathematical formula that *measures where the current close is in relation to the trading range of the last "X" periods of time*. We use a 14 period look-back, so in plain English %K says where the current close is in the trading range of the last 14 days, expressed as a %.

At the FRED report we use it somewhat differently than is commonly taught. The standard way to use the indicator is to register a buy signal when it moves below, and then above, 20 (the lowest 20% of closing prices in the last 14 days). A sell signal is when the indicator moves above, and then below 80 (the highest 80% of closes over the last 14 days).

The other line, %D, is a 3 period moving average of %K. We have found that the Stochastic is sensitive, so we advocate taking signals only in the direction of the trend. When looking at the standard FRED report chart, this would mean taking buy signals when the 5 is above the 20, and sell signals when the 5 is below the 20, but using a different technique to exit positions. The reason for this is the Stochastic is quite sensitive, and can give early indications, especially in new trends. It also can get "stuck" in the direction of trends, which connotes strength and not weakness. Another, preferred interpretation, is to use the indicator to measure risk. An example: buy in an uptrend, not when the stochastic is at 90% but rather wait until it falls below 50%, This way, even if a stock, commodity, or ETF does not give one of the "classic" signals, you can still use the indicator to assess risk, and leg into positions.

The FRED Report

Financial Research, Education & Data

The FRED Report (www.theFREDreport.com) was started to provide Financial Advisors and investors access to unbiased market research. The President of The Fred Report, **Fred Meissner, CMT** has been practicing Technical Market Analysis since 1983 and has worked in the research departments of Merrill Lynch and Robinson – Humphrey /Smith Barney. In addition he has served the public as a portfolio manager and financial advisor. We know the problems investors face and have devoted our career to helping find the best possible investments in all environments.

