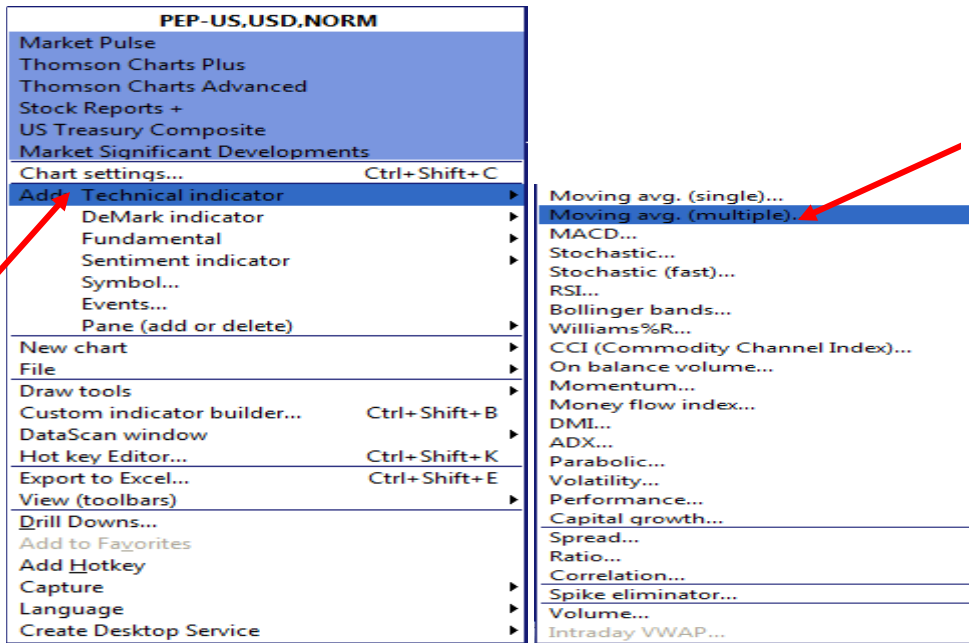


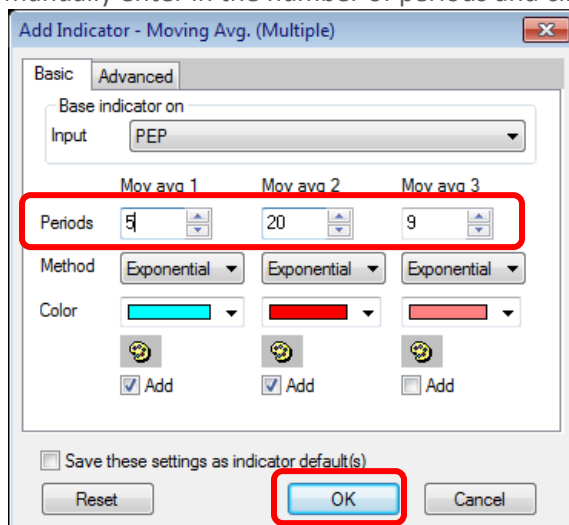
ADDING TECHNICAL STUDIES IN THOMSON CHARTS

Adding a Technical Study is very easy to do within Thomson ONE. You can access most of the Technical Studies available within your charting package by simply Right Clicking within the Chart itself. All of the Technical Studies within Thomson ONE will have default parameters that you can either choose to use or manually change. Below are steps that will show you how to do this.

- 1) Within your Thomson Charts Plus or Thomson Charts Advanced right click and hover your mouse over the section that says "ADD: Technical Indicators." There will be a fly-over that lists the Technical Studies Available.
- 2) Choose Moving Avg. (Multiple)



- 3) Once you have selected Moving Avg. (Multiple) you can either keep the default periods, or manually enter in the number of periods and click ok.



Here is an example of what your chart would look like if you follow the steps listed above:



You can do the same thing with other studies such as Stochastics. You can do so by following the steps above but instead of choosing Moving Avg. (multiple), you would choose Stochastic...

Here is an example of what your chart would look like if you added Stochastics to the chart that we created above. This chart uses the default periods for Stochastics but still utilizes our custom periods for the Moving Averages.

